

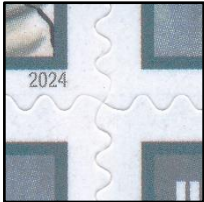
Sheet Stamp Pane of 20, (73c) Hank Aaron 2024 – Ashton Potter (USA) Ltd. (APU)

Genuine

5908

Dull surface (Daylight);
Tagged, faint Greenish yellow (SWUV);
Hi-brite paper (LWUV).
Backing paper: Dead (LWUV).

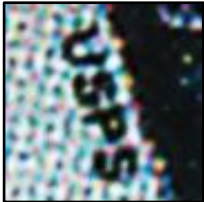
Colors: overall lighter than CF1.



Die cut: 10.6 x 10.8
Even



Date:
Black with White dots



Microprinting USPS:
Thick font, round S



Hand over frame line



Background: Waffled
pattern 15° angled



Margin: Clear sharp
image of Hank



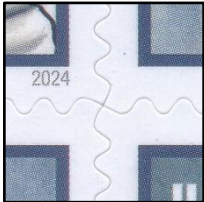
Plate # P1111

Counterfeit

5908 CF1

Glossy surface (Daylight);
Tagged, bright Yellowish green (SWUV);
Low Bright paper (LWUV);
Backing paper: Hi-brite (LWUV).

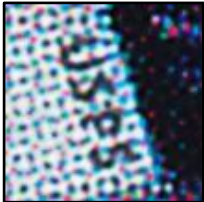
Colors: overall darker than genuine.



Die cut: 10.5 x 10.75
Even



Date:
As Genuine



Microprinting USPS:
Thin font, S as Snake



Hand cutoff
with frame line



Background: Waffled
pattern 75° angled



Margin: Blurred uneven
image of Hank

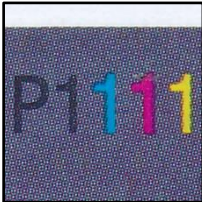
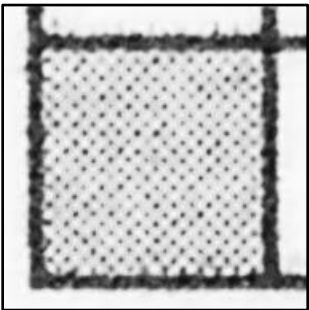
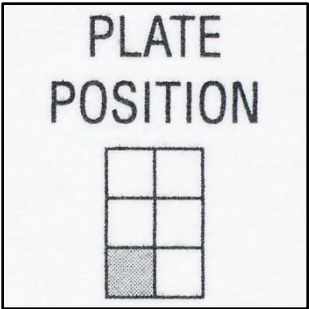


Plate # P1111,
Thicker font as genuine

Sheet Stamp Pane of 20, (73c) Hank Aaron 2024 – Ashton Potter (USA) Ltd. (APU)

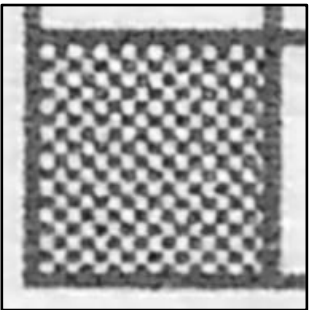
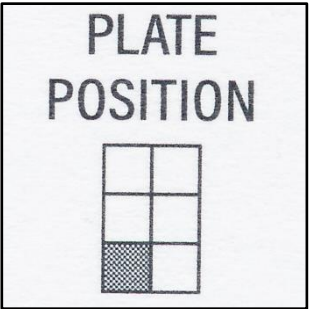
Backing Paper and Plate Position

Genuine



Fine dotted pattern 45° angled
can be on all six positions

CF1



Chessboard pattern 45° angled
Lower Left (LL) position