

NEW YORK CITY FOREIGN MAIL 1845–1878

Nicholas Miles Kirke

New York City Foreign Mail
1845–1878

Volume 1, 1845–1870

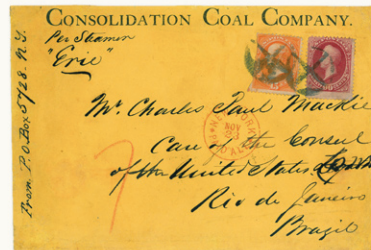


Nicholas M. Kirke

Volume 1

New York City Foreign Mail
1845–1878

Volume 2, 1871–1878



Nicholas M. Kirke

Volume 2



Fig. 3

Thanks to my publishers



Fig. 4

infor@collectorsclub.org

\$145 + shipping

(\$130 + shipping for members)

***PROFITS FROM THIS BOOK GO TO
THE COLLECTORS CLUB***

The man who coined the phrase ‘New York Foreign Mail Cancellations’



Fig. 5

J. Murray Bartels (1872-1944)



Fig. 6

William R. Weiss Jr. (1943-2015)

His book,

'The Foreign Mail Cancellations of New York City 1870-1878'

A treasure trove of information.

NEW YORK CITY - ITS HISTORY

ORIGINS;

- 1524 Manhattan (Manahatta) Island discovered by Giovanni da Verrazzano.
- 1609 the Dutch purchased the Island from the Lenape Indians.
- 1624 Manhattan renamed 'New Amsterdam'.
- 1664 Renamed 'New York'.

INDUSTRIAL DEVELOPMENT;

1810 NYC the hub for U.S. expansion.



Fig. 7

Two factors drove this development:



Fig. 8

Firstly, The world's largest natural harbor.



Fig. 9

Secondly, ample supply of labour.

Centre for U.S. manufacturing.

By 1810 most populous U.S. city

EARLY POSTAL EVENTS



Fig. 10

Robert H. Morris
introduced his Provisional stamp in 1845



Fig. 11

A Jul 15, 1845 to London



Fig. 12

Earliest
datestamp

Why were these letters collected?

Geometric cancels

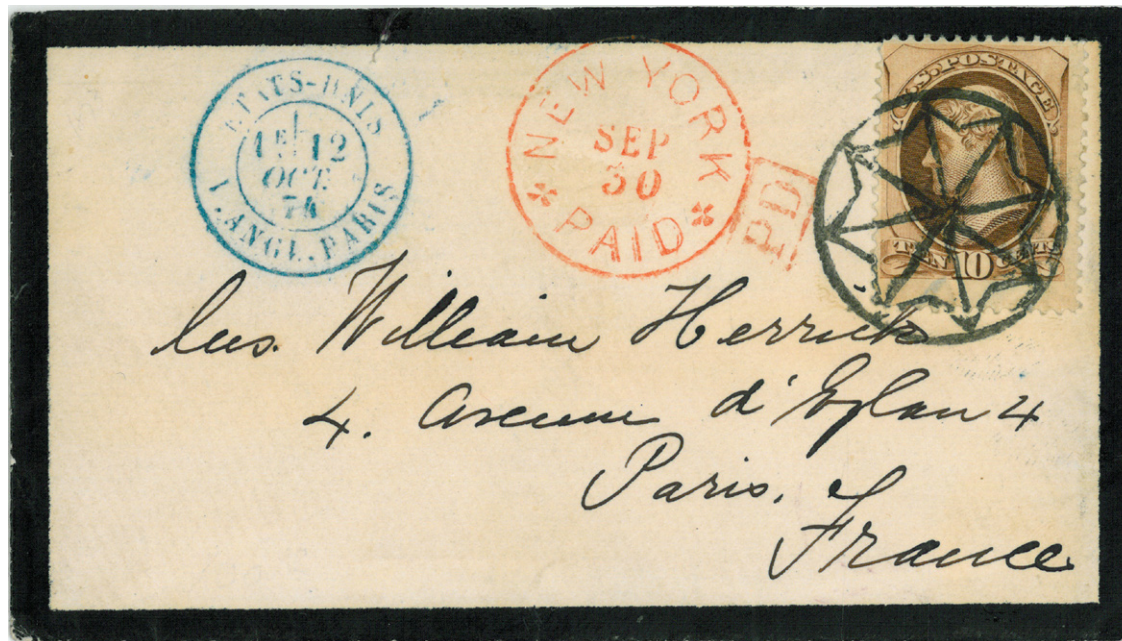


Fig. 13

Cover 1874 to France

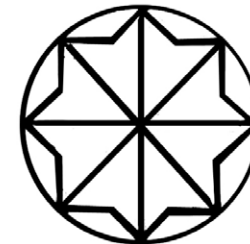


Fig. 13a

THE BOOK INTRODUCES 4 CHANGES

Firstly, change of title

*`New York Foreign Mail`, acronym `NYFM`,
was only approximately 10%,*

More appropriate to term it,
*`New York **City** Foreign Mail`, acronym `NYCFM`.*

Comparative example



Fig. 14



Fig. 15



Fig. 16

Cover received a geometric cancel and a red **DEC 29 NEW YORK** Exchange Office datestamp. Thus a bona fide New York City Foreign usage.

Comparative example



Fig. 17



Fig. 18
New Orleans



Fig. 19

From New Orleans same **DEC 29 NEW YORK** datestamp,
but no NYCFM cancel. So **NOT** NYCFM usage.

Secondly, a change in point of origin of a cover



Fig. 20



Fig. 21



Fig. 23



Fig. 22
Wells Fargo

To England from Vancouver Island via New York where it received the 'shield cancel'
More accurate to define NYCFM as
'Cancelled' rather than 'Originated in New York City'

Thirdly, a change in the existing NYCFM time-frame

The traditional time-frame 1870 to 1876 misleads.

They existed in 1850



Fig. 24

THE EARLIEST

1850 to Prague, bearing a 7 bar red grid cancel.

Qualifies as a 'New York City Foreign Mail' cancel.



Fig. 25

And existed in June, 1877



Fig. 26

THE LATEST

1877, to Germany shows the last NYCFM cancel.



Fig. 27

And lastly, the introduction of a chronological classification for NYCFM

This helps show design evolution.



Fig. 28

Jan 25, 1865 to China



Fig. 29



Fig. 30

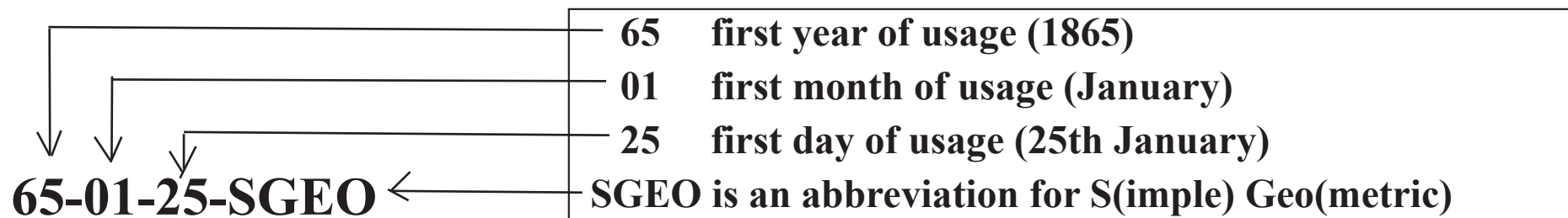
Previous classification;

a 'five point star in a circle with a negative centre'



Fig. 28 Jan 25, 1865 to China

My new method lists this cancel as compiled below



Does NYCFM offer other attractions?

Cover to Burma



Fig. 32

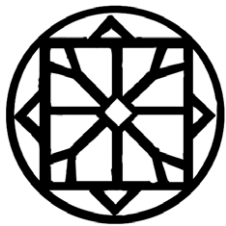


Fig. 33
NYCFM cancels



Fig. 34
Exchange office datestamp
with a 24¢ credit to G.B.



Fig. 35
1 pence Colonial
postage due in India



Fig. 36
Sea Post Office datestamp



Fig. 32

- ~ to Burma.
- ~ penultimate voyage of North German Lloyd's Line *Hansa*.
- ~ 24¢ General Winfield Scott with two President Andrew Jackson 2¢ stamps.



Fig. 32

~ via Southampton, Brindisi, Alexandria, Suez, Bombay, and Calcutta.

~ 28¢ treaty rate effective Jan, 1871 to Jul, 1875.



Fig. 32

- ~ **Historical element:**
Burma - a province of the British Empire.
Shared India's postal rates, gaining independence in 1948.
- ~ **Lastly, other personal philatelic interest;**
Subject matter of stamps
Cute fancy cancels

This cover epitomizes the many facets of NYCFCM.

Migration of cancel designs domestic to foreign use.....

DOMESTIC USE

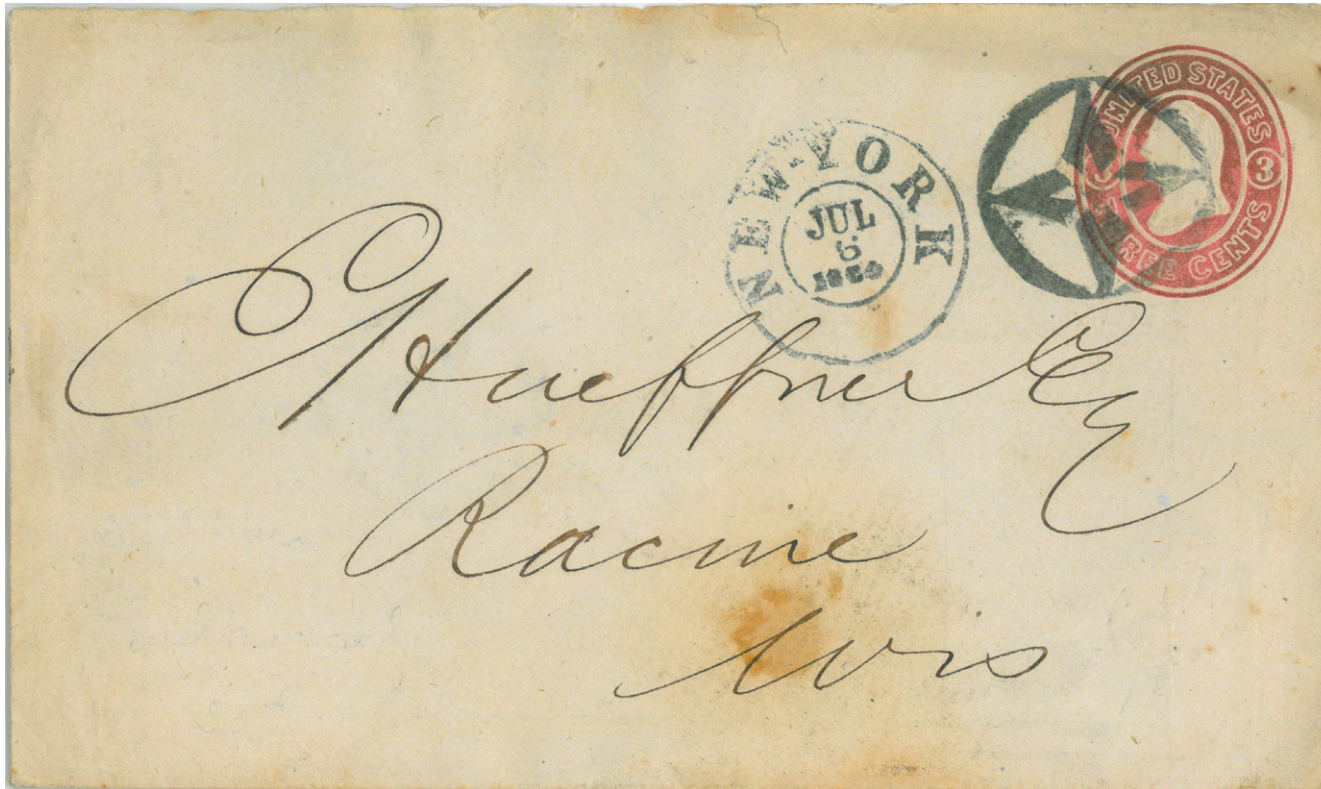


Fig. 37

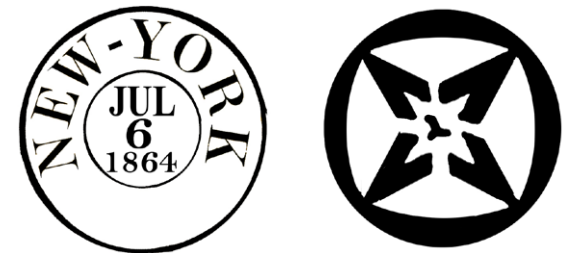


Fig. 38

Jul 6, 1864, domestic use to Wisconsin,
with duplex cancel shown at Fig. 38.

FOREIGN MAIL USE



Fig. 39



Fig. 40



Fig. 41

Jul 23, 1864, to Germany.
Cancels identical to the cancel used earlier domestically.

Here is another example.....

DOMESTIC USE



Fig. 42

April, 1862, 10¢ domestic envelope from to Philadelphia.

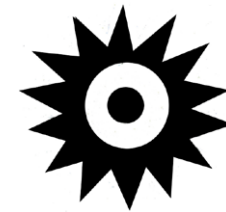


Fig. 43

FOREIGN MAIL USE



Fig. 44

1864, to China, with identical cancels, but now used as a foreign mail cancel.

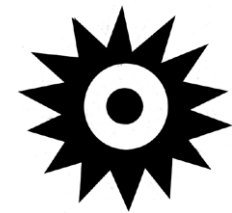


Fig. 45

The book explores evolution of New York domestic cancels



Fig. 47

Fig. 46 shows an early use of a datestamp on a Sep 2, 1851, letter to New Jersey. The Fig. 47 datestamp simultaneously dates the cover and cancels the stamp.

A 2nd day of use devised by Marcus P. Norton.

Other Exchange Offices

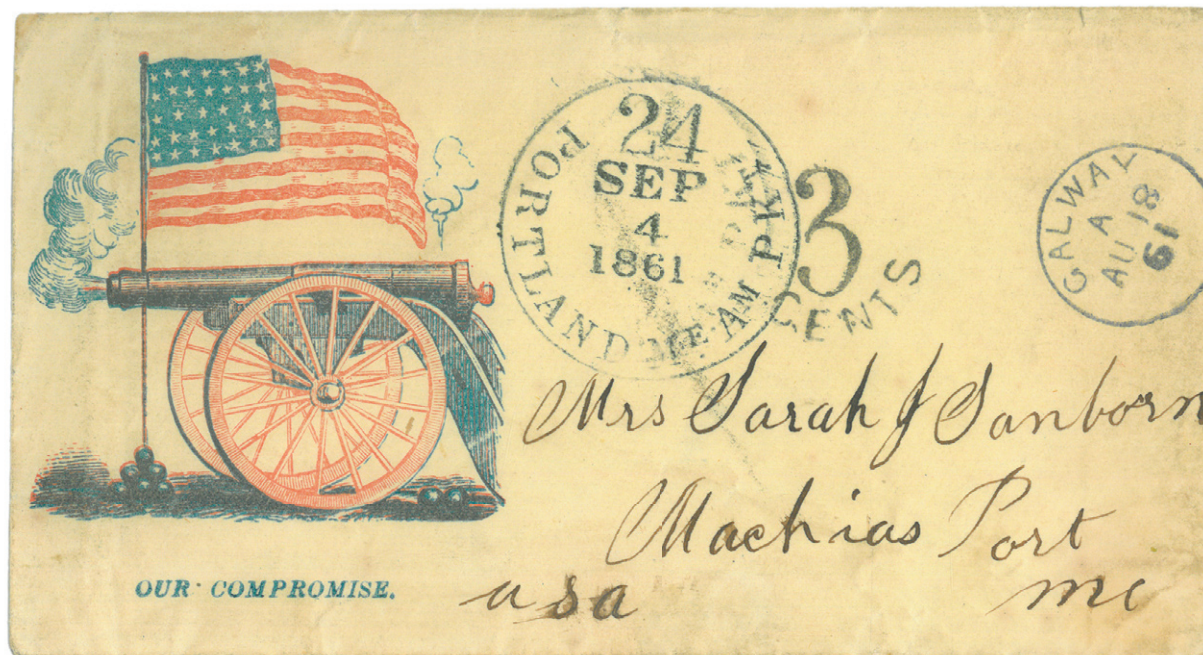


Fig. 48

PORTLAND, MAINE

Stampless Patriotic inbound to the US



Fig. 49



Fig. 50

Aug 18, 1861, from Ireland then Liverpool, going via Londonderry and Quebec, arriving Portland Sep 4th. Postage paid the 24¢ treaty rate. The '3 cents' handstamp indicated a 3¢ debit to the US to the credit of GB.

A chapter explores NYCFM geometric evolution

Fig. 51 becomes Fig. 53 becomes Fig. 54

CROSSES WITHIN EIGHT POINTED STARS



Fig. 51



Design
Linkage



Fig. 53



Fig. 54



New York City Foreign Mail Volumes

Extrapolated from Post Master's reports

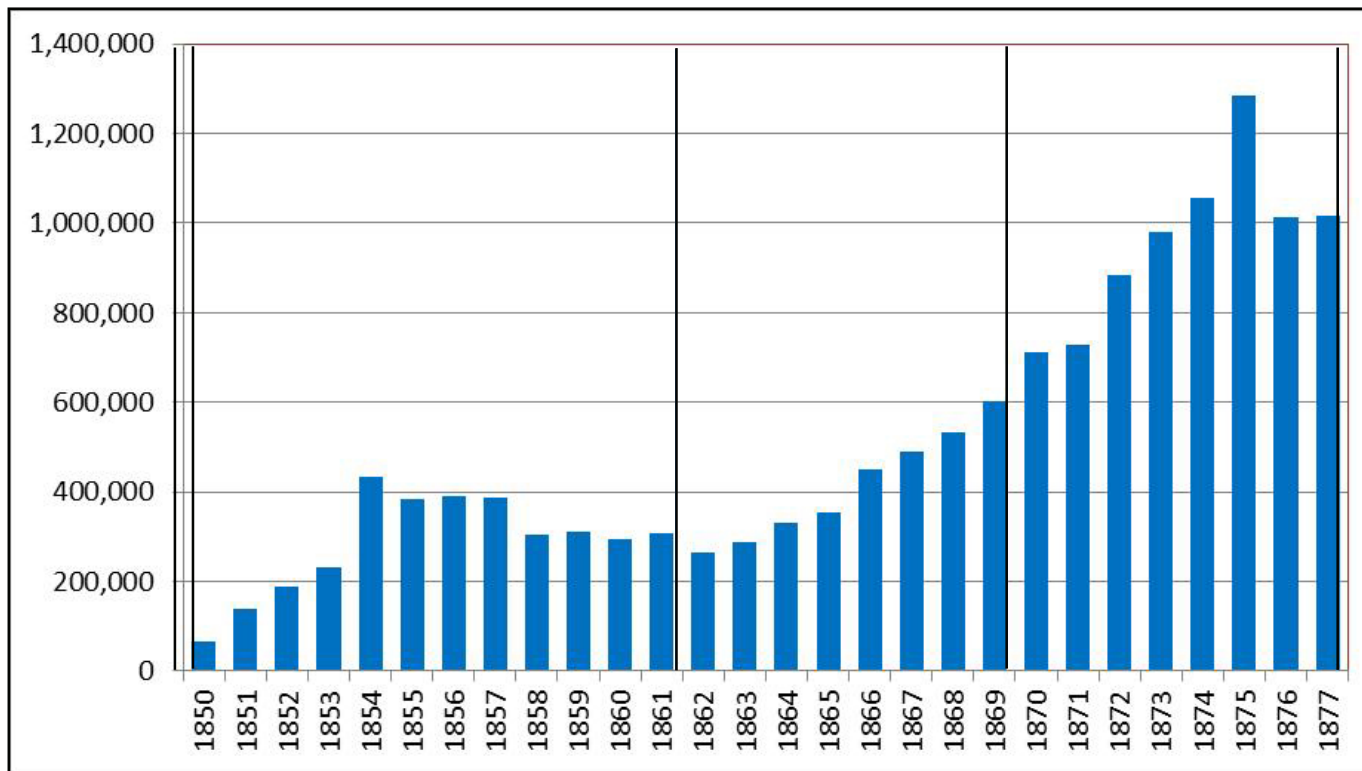


Fig. 55

Rising from 50,000 letters in 1850, to over 1.3 million in 1875.

NYCFM Destinations

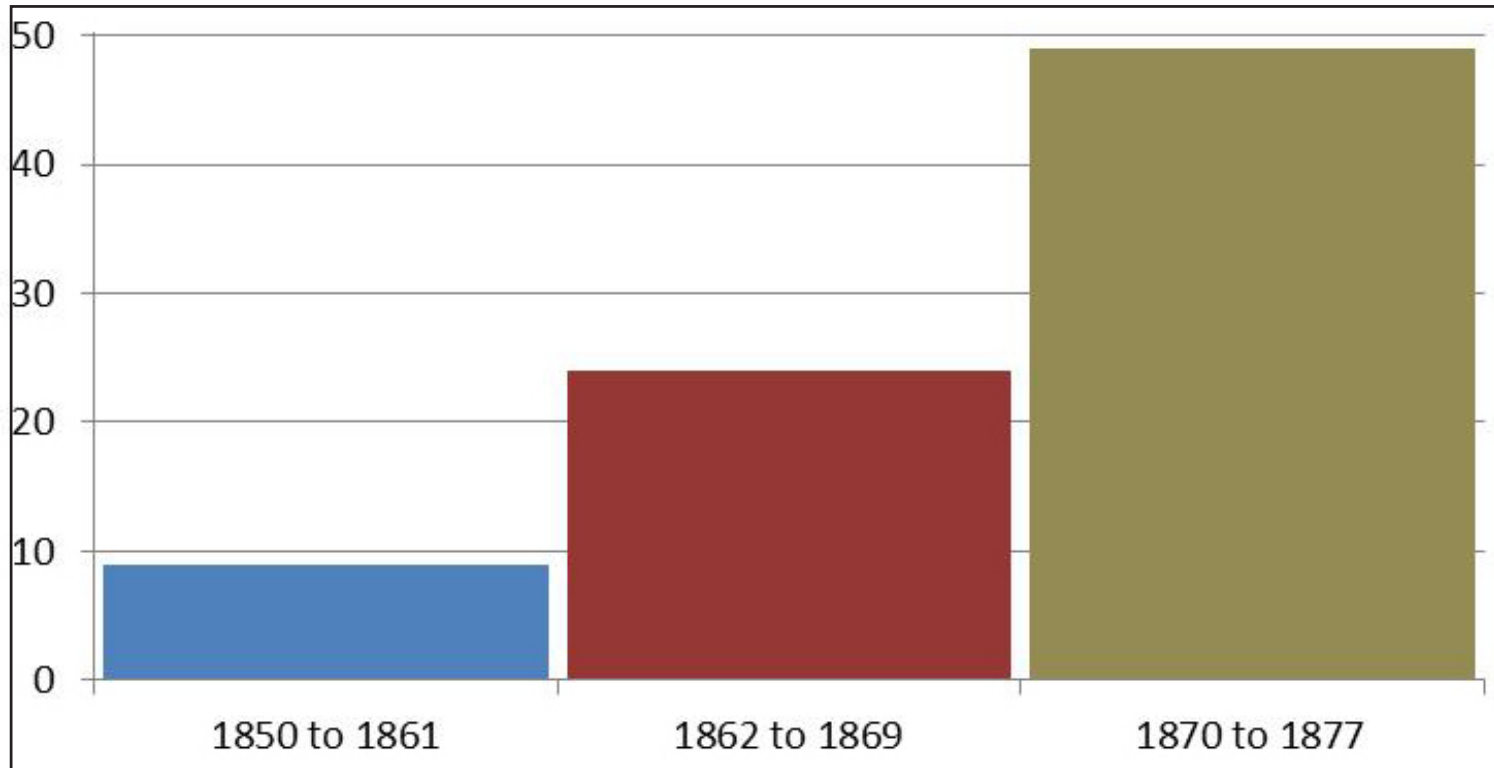


Fig. 56

The graph shows an increase of 544% 1850 to 1877.

My book shows over 70 different destinations

Mistakes by the author are included



Fig. 57

Cover to France bearing a Scott #121, 30¢ ultramarine & carmine stamp

- ~ two clear Philatelic Foundation certificates
- ~ a Stanley Ashbrook authentication on the rear
- ~ processed through established auctions house

A fake or the real thing?

BUY THE BOOK AND FIND OUT!!!

Why write such a book?

Two fundamental reasons;

Document my collection whilst in one piece

Only a book provides space to explain the changes

An observation;

Philatelists cover a broad spectrum.
They collect material logically, illogically and sometimes
because nobody collects their speciality.

New York Foreign mail provides three attractions;

Brilliant geometric cancels.
Challenge of completing sets 1¢ to 90¢ bearing the same cancel.
Opportunity to collect exotic destinations.

Stamp stories pepper the text



Fig. 59

.... Zebras, seen here in an 1866 newspaper;
*how would you like that, Laura, to canter down
the drive on?*



Fig. 60

March, 1866 to France. A connection to
the newspaper article?



Fig. 61



Fig. 62

Prickly friends



Fig. 63

Ruminating *'The high values taste better'*

Or penguins raising the bidding

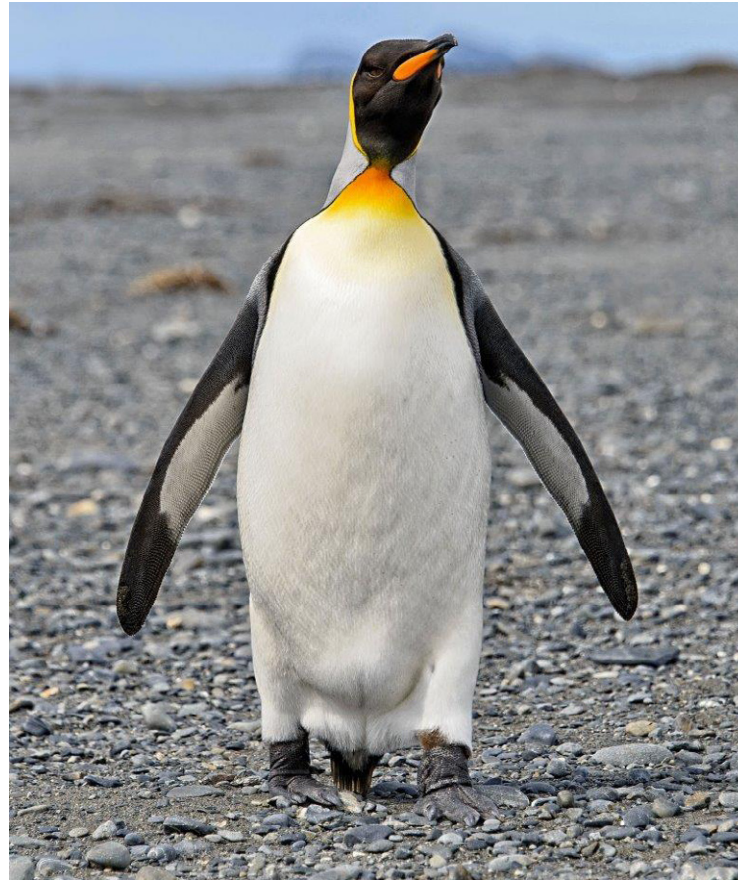


Fig. 64

A different stamp book

Designed for regular use

Exploring new avenues

Use as a reference book or read through like a **Jack Reacher** novel.

Critically, it might inspire interest in foreign mail.

THE EDITOR



Fig. 65 Seija-Riitta Laakso

Closing Note

That brings this road-map to a close.

I hope to have shown NYCFM encompasses a wide range of collecting interests

ARE THERE ANY QUESTIONS?

Thank you

Nicholas Miles Kirke

e-mail: **kirke@philatelist.cz**

link to download the book's road-map is at:

<https://philatelist.cz/BOOKreview/>