

Sheet Stamp Pane of 12, (68c) Shaker Design 2024 – Ashton Potter (USA) Ltd. (APU)

Genuine

5896a-I

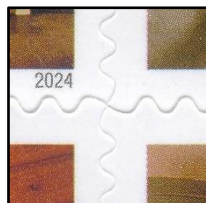
Dull surface (Daylight);

Tagged (SWUV);

Dead paper (LWUV);

Backing paper: Dead paper (LWUV).

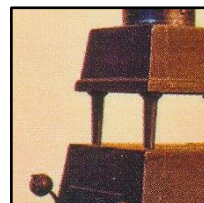
Colors: More Brownish as CF1.



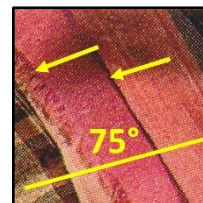
Die cut: 10.6x 10.8
Even



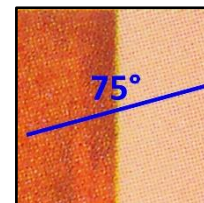
Date:
Black with White dots



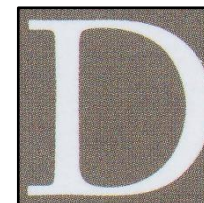
Clear printing with
visible details



Clear printing with
visible details



Solid waffled/ Dotted
pattern 75° angled



Margin Lettering:
Even smooth edges



Plate # P11111111
Last Two 1's solid

Counterfeit

5896a-I CF1

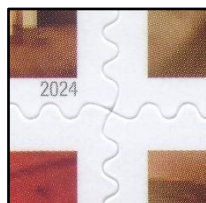
Semi-Gloss surface (Daylight);

Tagged (SWUV);

Hi-brite (LWUV);

Backing paper: Hi-brite paper (LWUV).

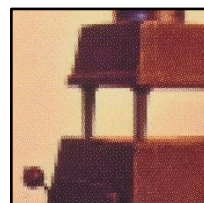
Colors: more Reddish Brown as genuine.



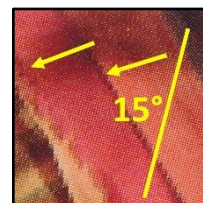
Die cut: 10.9 x 10.95
Even



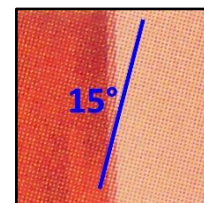
Date:
Almost as genuine



Blurred printing
with double impression



Blurred printing
with saw tow edges



Waffled/ Dotted
pattern 15° angled



Margin Lettering
Uneven edges

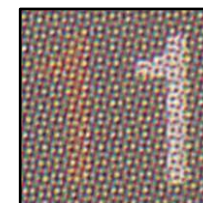
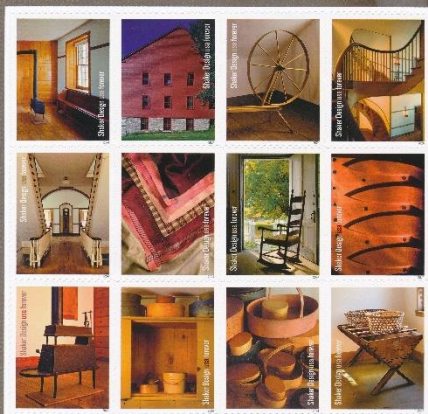


Plate # P11111111
Last two 1's dotted

Shaker Design

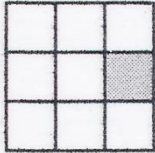
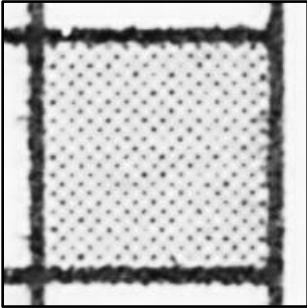
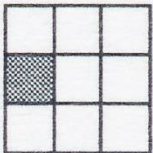
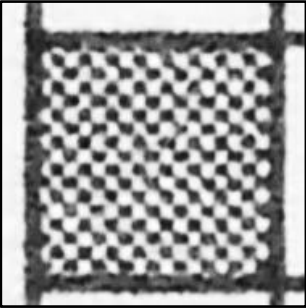
5896



- a. Meeting Room, Hancock Shaker Village, Pittsfield, Massachusetts
- b. Tannery, Mount Lebanon Shaker Village, New Lebanon, New York
- c. Spinning Wheel, Fruitlands Museum, Harvard, Massachusetts
- d. Staircases, Pleasant Hill Shaker Village, Harrodsburg, Kentucky
- e. Dwelling House Hallway, South Union Shaker Village, Auburn, Kentucky
- f. Silk Neckerchiefs, South Union Shaker Village
- g. Rocking Chair, Canterbury Shaker Village, Canterbury, New Hampshire
- h. Bentwood Box Detail, Hancock Shaker Village
- i. Heater Stove, Hancock Shaker Village
- j. Cupboard With Oval Boxes, Fruitlands Museum
- k. Bentwood Boxes and Carriers, Fruitlands Museum
- l. Cheese Baskets, Hancock Shaker Village

Sheet Stamp Pane of 12, (68c) Shaker Design 2024 – Ashton Potter (USA) Ltd. (APU)

Backing Paper and Plate Position

<p>Genuine Off-white paper</p> <p>PLATE POSITION</p>   <p>Fine dotted grid 45° angled, can be on all nine positions</p>	<p>CF1 White paper</p> <p>PLATE POSITION</p>   <p>Chessboard grid 45° angled, on Central left (CL) position</p>				
--	--	--	--	--	--