

Sheet stamp (\$1.15) Global Poinsettia 2018 – Banknote Corporation of America (BCA)

Genuine

5311

Dull surface (Daylight);
Tagged (SWUV);
 Hi-brite paper (LWUV);
 Backing paper: Dead paper (LWUV).

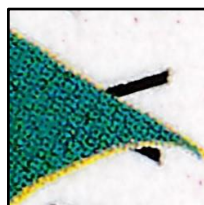
Rouletted 20, Even, Large cut is 2¼ mm located on the top and bottom rouletted row above each vertical rouletted row.



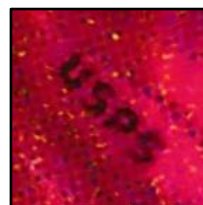
Die cut: 8, Even



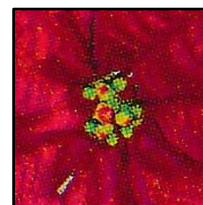
Date: Black solid font,
Round "0" and Oval "8"



Black lettering under
green leaves



Microprinting USPS



Yellow hart: Clear dots;
Leaves: Gray shades



GLOBAL lettering:
Thick, solid Red



Plate # B11111
Solid font

Counterfeits

5311 CF1

Semi-glossy surface (Daylight);
Untagged (SWUV);
 Low bright paper (LWUV);
 Backing paper: Hi-brite (LWUV).

Rouletted 9, Uneven

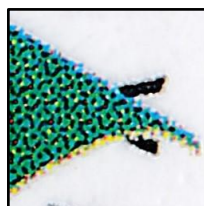
Color: slightly darker than the Genuine



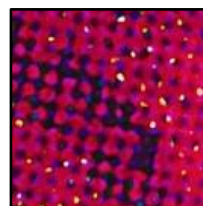
Die cut: 8, Uneven



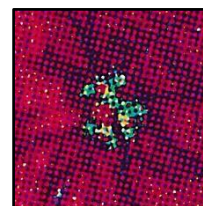
Date: Black solid font,
Oval "0" and Round "8"



Black lettering under
green leaves



No Microprinting,
Only black shadows



Yellow hart: faded dots;
Leaves: Black shades.



GLOBAL lettering:
Thinner, Red with dots

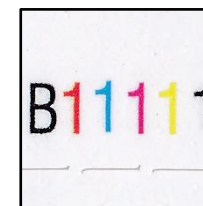


Plate # B11111
Solid font

5311 CF2

Semi-glossy surface (Daylight);
Untagged (SWUV);
 Hi-brite paper (LWUV);
 Backing paper: Hi-brite (LWUV).

Rouletted 20, Even and no large cut

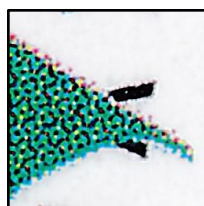
Color: almost as Genuine



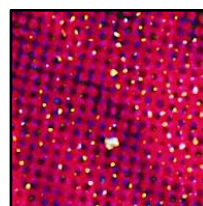
Die cut: 8, Even



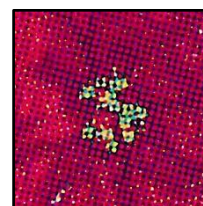
Date: Black solid font,
Oval "0" and Round "8"



Black lettering under
green leaves



No Microprinting,
Only very faint shadows



Yellow hart: faded dots;
Leaves: faint shades.



GLOBAL lettering:
Thinner, Red with dots



Plate # B11111
Solid font

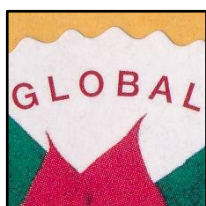
5311 CF3

Semi-glossy surface (Daylight);
Tagged, very bright under SWUV & LWUV;
 Backing paper: ? (LWUV).

Rouletted ?

Color: slightly darker than the Genuine.

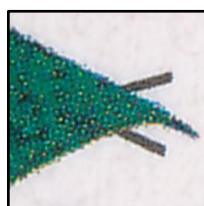
Found on cover Jan 2023.



Die cut: 8, Even



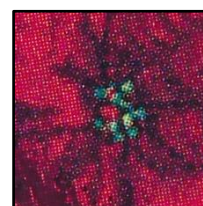
Date: Gray solid font,
Oval "0" and narrow "8"



Black lettering under
green leaves



No Microprinting,
Only black shadows




Yellow hart: dark dots;
Leaves: Black shades.




GLOBAL lettering:
Thin, Red with faint dots

Plate # ?

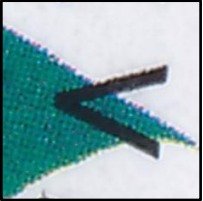
5311 CF4
 Semi-glossy surface (Daylight);
 Tagged (SWUV);
 Dead paper (LWUV);
 Backing paper: ? (LWUV).
 Rouletted ?
 Color: slightly lighter than the Genuine.
 Found on cover Oct 2024.




Die cut: 8.1, Even




Date: Black solid font,
Round "0" and "8"




Black lettering on top of
green leaves



Microprinting USPS,
Clear inverted font

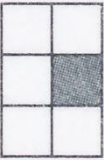

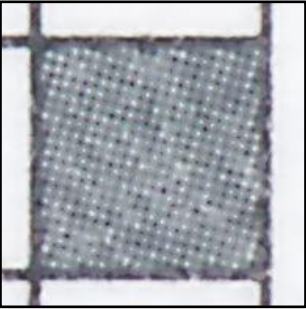
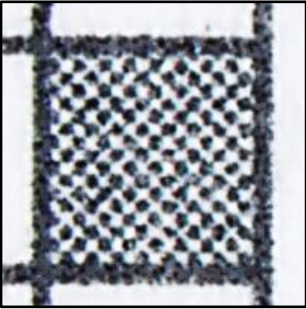


Yellow hart: faded dots;
Leaves: faint shades.



GLOBAL lettering:
Red with dots

Plate # ?

Sheet stamp (\$1.15) Global Poinsettia 2018 – Banknote Corporation of America (BCA)					
Backing Paper					
Genuine	CF1	CF2	CF3	CF4	
Off-white paper	White paper				
<div> PLATE POSITION  </div>	<div> PLATE POSITION  </div>	?	?	?	
		?	?	?	
Fine waffled grid, 15° angled, can be on all six positions	Dotted grid, 45° angled, on Central Right (CR) position				