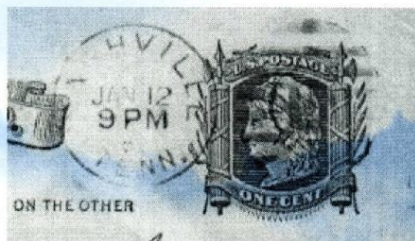


MACHINE CANCEL DATABASE
VOLUME TN: Tennessee

July 2013

Tennessee Machine Cancels
by
Richard E. Small



Tennessee's first machine cancel.

Copyright © 2013 by Richard E. Small, all rights reserved.

Printed in the United States of America

Use or reproduction in part or in whole without the express permission of Richard E. Small is expressly forbidden.



Publisher: Lulu Press, www.lulu.com

Copies maybe ordered from Lulu Press at: www.Lulu.com

Price: \$20
(subject to revision)

Table of Contents

1. LE - Leavitt
2. AM – American
3. BA – Barry
4. BF – Barr-Fyke
5. CH - Chamberlain
6. CI – Columbia-Ielfield
7. CO – Columbia
8. CU – Cummins
9. DO – Doremus
10. FC – Facer-Cancelers (PB, NEC and NEC)
11. FT - Flats cancelers
12. HA - Hampden
13. IE – Ielfield
14. IJ – Ink Jets
15. IN – International Electric
16. IN HD - International Model HD
17. Spray Ons
18. TM - Time-Marking
19. UN – Universal Electric
20. UN - Universal Model K
21. Promotional Slogans

Appendix A – TN Postal History Disc, Table of Contents

Appendix B- TN Machine Cancel Database

Appendix C- TN Promotional Slogans

Tennessee Machine Cancels by Richard E. Small

Introduction

I am introducing the postmarks made by canceling machines. The presentation is starts in 1870 with the Levitt machine at Nashville, then it is alphabetical by the machine manufacturer and code used in the Machine Cancel Societies Project 2000 Database (see Appendix B). Although all recorded canceling machines are listed, not all varieties (types) are displayed. Refer to Appendix B for a complete listing of machine manufacturers and their types according to the authors adopted by the Machine Cancell Society's Project 2000 Machine Cancel database. A detached Postal History Resource disk is available with additional information and scans (see Appendix A for its Table of Contents).

There were 352 Post Offices in Tennessee that used canceling machines. Equipment from 18 different manufacturers was deployed through out the state.

1. LE - Leavitt

A rapid canceling machine Maryland was used at Nashville in 879. Its earliest-recorded use is July 31, 1879. It was a product of Thomas Leavitt of Boston, Mass. This machine was used until 1885. Because of their uniform thickness, this machine was primarily used for canceling post cards. Cancels on letters are uncommon.



Figure 1. Nashville Leavitt machine cancel (Type LE BC).

2. AM - American

From 1896 to 1902, two machines from the American Postal Supply Company of Boston, Mass. were installed in Baltimore. The American "Flag" types A14 and B14 were used at several Post Offices. "Station" Flag type B38 were used at stations and branches. These machines were used at 49 Post Offices until 1939.



Figure 2. American flag machine, type A14(1).



Figure 3. American flag machine, type A38.

3. BA - Barry

In 1897 a machine by the Barry Postal Supply Company of Oswego, New York was installed in Nashville. The following year machines were installed at Chattanooga and Knoxville.

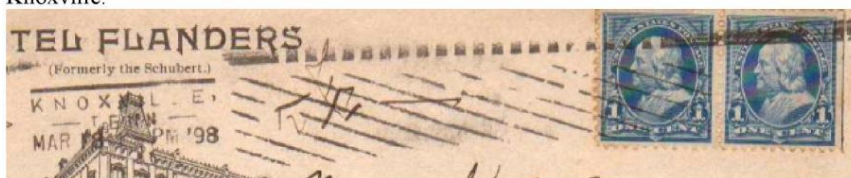


Figure 4. Barry machine type H-2(0).

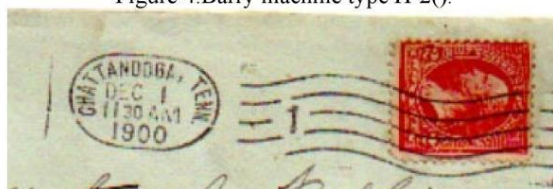


Figure 5. Barry machine type O-2(1).

4. BA- Barr-Fyke

In 1899 a machine from the Barr-Fyke machine company of Kansas City, Missouri was installed at Memphis. This machine produced the rare "tassel" Flag.

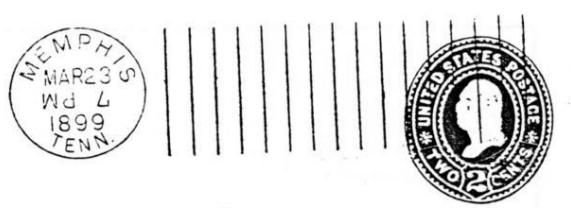


Figure 5. Barr-Fyke type C4-121.



Figure 6. Barr-Fyke type C4-121R.

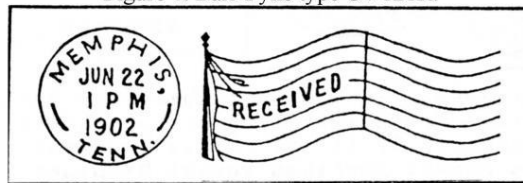


Figure 7. Barr-Fyke "tassel" Flag.

5. CH – Chamberlain

In 1991 an Advanced Small Canceling machine made by the Chamberlain Company of Hunt Valley, Maryland, was installed at McKenzie and Paris. The postmark of this machine is identical to some of the postmarks of the Facer-Canceler machines. It can be identified with a 5 digit ZIP code and being from a small town.



Figure 8. Chamberlain type Az26.

6. Columbia-Ielfield

In 1945 the Columbia and Ielfield Companies merged. The company re-sold machines from both Columbia and Ielfield, resulting in mixed dies. A new machine was produced that would accept the dies of the Universal machines. These machine were used at 7 Tennessee post offices.



Figure 9. Columbia-Ielfield type L6().



Figure 10. Columbia-Ielfield type Z6..

7. Columbia

In 1916 a Columbia Junior machine from the Columbia Postal Supply Company of Silver Creek, New York was installed at Gallitan. The Columbia Junior was a hand-powered machine (types E1W, G1W and G2W) and used at many Tennessee Post Offices.



Figure 11. Columbia Junior hand-powered machine type E1W.

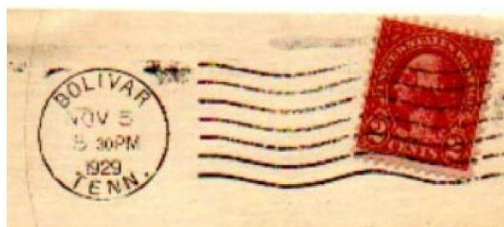


Figure 12. Columbia Junior hand-powered machine (type G1W).



Figure 13. Columbia Junior hand-powered machine (type G2W).

8. CU - Cummins

In 1914 a machine from the Time-Marking Cummins Company of Chicago, Illinois was installed Ripley. This was the Cummins Model 2 hand powered machines (types F131).



Figure 13. Cummins type F131

9. DO - Doremus

In 1902 a machine from the Doremus Postal Supply Co. of Washington, DC was installed at Jackson (type D). The type D was also used at Columbia. Type E were used at Dysersburg, Fayetteville, Harriman, Jackson, Paris, Pulaski and Tullahoma. A type F was used at Harriman and Paris. There are also received types (ER).

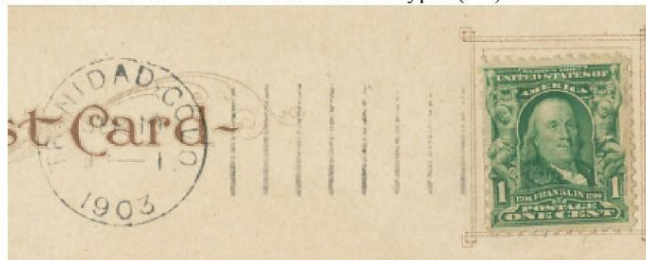


Figure 14. Doremus type D.



Figure 15. Doremus type E.



Figure 16. Doremus type ER.

10. FC – Facer-Cancellers

Starting in 1970 several Facer-Canceler machines were purchased by the Post Office. The machines are the Pitney-Bowes (PB) Mark II of Stamford, Conn., the National Cash Register (NC) Mark 36, the Automatic Facer Canceler System (AFSC) by Electro-Com (EC) of Arlington, Texas (a division of Siemens Energy & Automation, Inc), NEC (NE) (Nippon Electric) of Japan and Siemens (SI) of Arlington, Texas. After 1991 all machines used the same dies and, therefore one cannot distinguish between the manufacturers without an installation list. However if the cancellation does not have a ZIP code, then it is a Pitney-Bowes or NCR product (refer to the database for the NCR machines). Several installation lists have been published in the Machine Cancel Forum and have been incorporated in Project 2000 Database in Appendix B. Where a cancel exists that is not listed on an installation list or verified by some other means, then the Manufacturer is coded as Facer-Canceler (FC). In 1987 the Pitney-Bowes Mark II was upgraded and the electronics (old vacuum tubes) were replaced by solid state. The result was called the Micro Mark II.

In 2011 Siemens/Electro/Com was awarded a contract for the AFSC-200 machine. Siemens is the Electro-Com machine. A NEC machine was at Johnson City and Nashville in 1999.

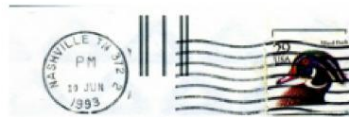


Figure 17. Facer-Canceler type FC BTSz-200.

11. FT - Flats Cancellers

In addition the Post Office was developing machines to cancel flats (large envelopes). Among them is a machine developed by the Diagraph Bradley of Herrin, Illinois.



Figure 18. Flats Canceler type DB Az18.

12. HA – Hampden

In 1899 a machine from Hampden (Landfear) Cancelling Machine Company of Holyoke, Mass. These machines were used at Bristol, Clarksville and Jackson.



Figure 19. Hampden type B8.

13. IF - Ielfield

In 1925 August Ielfield left Columbia and started the Ielfield Postal Supply Co. of Silver Creek, New York. The Ielfield Co. sold directly postmasters and never received a government contract. He returned to Columbia in 1945. Many Ielfield machines were sold to local postmasters. There were used at Limestone, Mountain Home, Ooltewah, Piney Flats, Smithville and Rockford. These post offices also used Columbia machines. Note the die space in the killer.

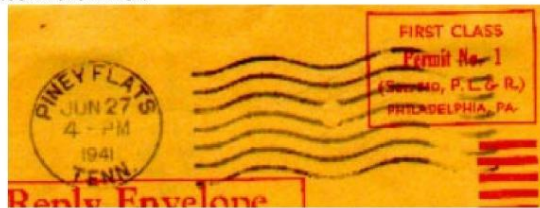


Figure 20. Ielfield type G2().

14. IJ - Ink Jets

In the 2000, the Post Office started using Spray On or Ink Jets attached to the Facer-Canceler machines made by Video Jet Technologies of Wood Dale, IL. The AFCS machines were modified by replacing the steel die cancelers with an ink jet printer. The Machine Cancel Society Project 2000 database refers this modification as Ink Jets (IJ) to distinguish from the Spray-On (SP), single markings from other machines in the AFCS system. They were installed at Bristol TN/VA, Chattanooga, Jackson, Johnson City, Knoxville, Memphis, Nashville and the Northeastern Postal Facility in Nashville.

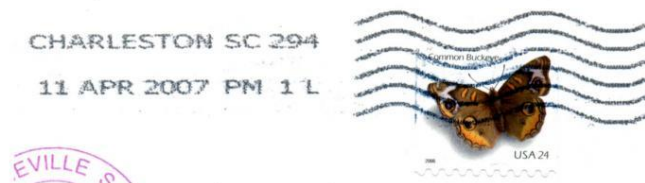


Figure 21. Ink Jet type Bz26.

15. International Electric.

In 1893 International Flier machine types B11(1) and C11(1) were installed at Chattanooga, Memphis and Nashville. A year later in 1894 a machine was installed in Knoxville. The earliest recorded date is from Nashville of August 8, 1893.



Figure 22. International type B11(1).

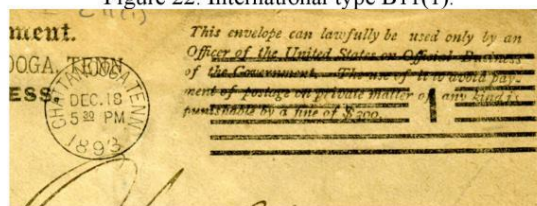


Figure 23. International type C11(1).

From , International types D22 and D32. International Flier machines (type D30) were until modern times. Smaller Post Offices used a slower Model M machine but its postmark is similar to the Flier.

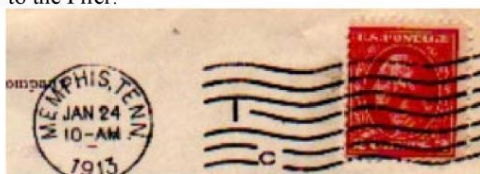


Figure 24. International type D32(1).

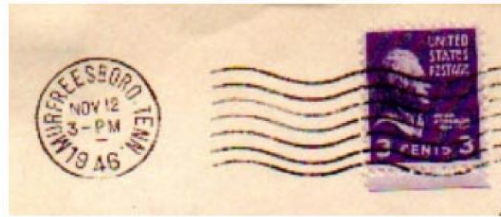


Figure 25. International type D30.

International Model L (type D34(1)) hand powered machines were used at Columbia, Memphis Station B, Winchester and Union City. The Model L cancel has a killer of 34 mm in length, compared to the much longer killer of the Flier and Model M machines. A similar cancel from Memphis may be a “blind” cancel for the Military Station.



Figure 26. International type D34(1).

Modern International machine come in a variety of types.



Figure 27. International type J30.



Figure 28. International type W30.

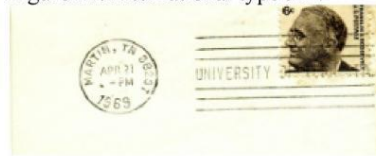


Figure 29. International type N25.

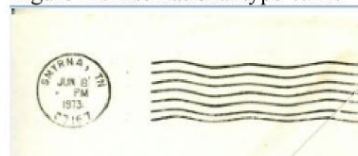


Figure 30. International type H30.



Figure 31. International type X30.



Figure 32. International type Y30.

16. IN HD - International Model HD

In 1936 the International Postal Supply Company started installing the Model HD2 hand powered machines. These machines exist in 5 types: HD1, HD2, HD3, HD4 and HD5. The HD 4 type is a box slogan and the HD 5 type is a station. All types have been seen with a ZIP code. There were 149 Post Offices using the HD2 machines.

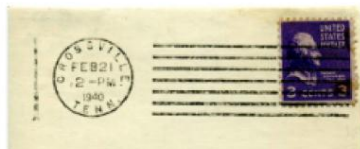


Figure 33. International type HD1.



Figure 34. International type HD2.

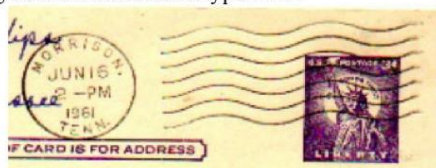


Figure 35. International type HD3.

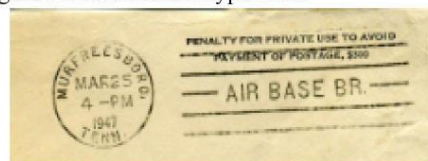


Figure 36. International type HD5



Figure 37. International type Hd3 ZIP code.



Figure 38. International type HD2 used on the Battleship USS Tennessee.

17. PB – Pitney-Bowes

In the 1960s the Pitney-Bowes started to develop Facer-Canceler machines. Three Mark II models were installed in Memphis in 1963 and Chattanooga, Knoxville and Nashville soon after that. Bristol, Florence, Jackson, Johnson City and Kingsport also had this machine. In Figure 39, below, note the 2 marks at the left edge of the circular date stamp. These are “trail marks” and identify the 2nd (trailing) machine in the Mark II configuration.



Figure 39. Pitney-Bowes Model Mark II, type BT200.

18. Spray Ons

The first ink jet printer spray-ons consisted of a single line sprayed onto the area of the postmark. They may have been in response to U.S. Courts refusing to acknowledge the dates on metered mail. These marking are applied at various parts of the AFCS machine, but do not cancel stamps. I have assigned the type to this mail marking as SP Bz1.

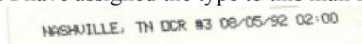


Figure 40. Spray-on mail marking.

19. TM – Time-Marking

In 1909 a machine from the Time-Marking Cummins Company of Chicago, Illinois was installed at Knoxville. A year latter one was installed at Nashville. Both were type A104. A year latter the type was changed D104 at Nashville. The later cancels are referred to a the Cummins machine.

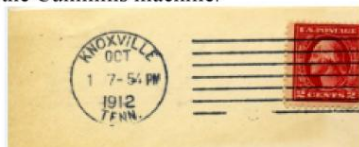


Figure 41. Time-Marking type A104.



Figure 42. Time-Marking type D104.

20. Universal Electric

In 1912 a machine from the Universal Postal Supply Company of Stamford, Conn. was installed at Jackson. By 1926 the Universal machine was merged with Pitney-Bowes, but the machine was sold under the name of Universal.



Figure 43. Universal Model B type B201.



Figure 44. Universal Model D type DT301.

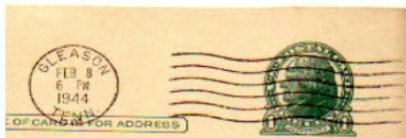


Figure 46. Universal Model D type DT300.



Figure 47. Universal Model D type DT600.



Figure 48. Universal Model D type BS300.



Figure 49. Universal Model G type BT500.



Figure 50. Universal Model G type BT200.



Figure 51. Universal Model G type Bbz200.

Official First Day of Issue cancellations are made by a Universal Model D machine originally located in Washington, DC and now at Kansas City, MO.

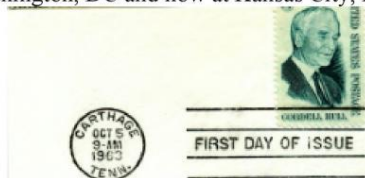


Figure 52. Universal Model D type DT125.

21. Universal Model K

Starting in 1942 the Pitney-Bowes (Universal) Company sold many hand-powered Model K machines to the United States Army and Navy for the war effort. These machines were re-installed in small Post Offices throughout the U.S. including Tennessee. The postmark is similar to the type DT200, but the distance from the Dial to the Killer is 5 mm vs 10 mm for an electric machine. This machine type is K200 and the ZIP version Kz200. Slogan and Station versions are K400 or Kz400 for the ZIP version. The Model K was used at 52 post offices.



Figure 53. Universal Mode K type K200. Figure 54. Universal Mode K type Kz200.

22. Promotional Slogans

The first slogan used in Tennessee was for the Memphis Street Fair in 1899. This scarce slogan is recorded from October 7 to October 26, 1899.

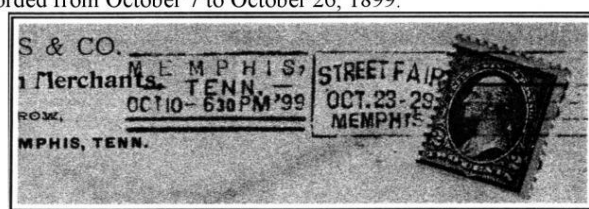


Figure 55. Barry machine with Memphis Street Fair Slogan.

The most popular slogan, the Pray For Peace, was used at 29 post offices.

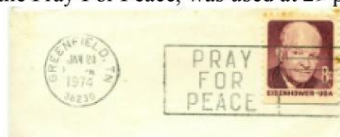


Figure 56. Pray For Peace Slogan

In 1983 the ZIP code was added to the postmark dial. This has made identification of Universal and International box type slogan cancels difficult. The most reliable way is to look at a cancel without a slogan for the same year.



Figure 57. International type H42 and Universal type DTz400.

References:

1. Machine Cancel Society, Project 2000 Database of Machine Cancels. (Maryland extract in Appendix A).

2. Billings, Bart, Robert Payne and Reg Morris, A Primer, US Machine Postal Markings (Machine Cancel Society, 2005).
3. Billings, Bart, Robert Payne and Reg Morris, U.S. Postal Markings Impressed By Machines, 2 Volumes (2004, Machine Cancel Society).
4. Payne, Robert J, Thomas Leavitt: His History and Postal Markings, 1875-1892. (2000):
5. Morris, Reg, Leavitt or Elijah Leavitt Howard, Machine Cancel Forum Issue No 100, August 1982.
6. Payne, Bob, An Exhibit of U.S. Classic Machine Cancels 1871-1991, 2 volumes (1995, Machine Cancel Society).
7. Morris, Reg and Robert J. Payne, The Barry Story (1988).
8. Morris, Reg, The History, Machinery and Postal Markings of the International Postal Supply Company of New York (1982, Machine Cancel Forum).
9. Bruns, James H, Marking America's Mail, Postal Stationary, January-February 1987.
10. Morris, Reg, The International Postal Supply Company of New York, Catalog of Machine Markings 1888-1910 (1982, Machine Cancel Forum).
11. Morris, Reg and Robert J. Payne, Pneumatic, The Machines and postal markings attributed to The Pneumatic Cancelling Machine Co. 1898 – 1904 (1991, Machine cancel Society).
12. Billings, Bart, Universal Stamping Machine Co., Machines and Postal Markings (1994, Machine Cancel Society).
13. Morris, Reg, Robert J. Payne and Timothy B. Holmes, The Columbia Story, 7 Volumes (1996 Machine Cancel Society).
14. Billings, Bart, International Postal Supply Co. Hey – Dolphin Canceling Machine Model HD-2, 2 Volumes (1995, Machine Cancel Society).
15. Small, Rich and Bart Billings, Universal Model K Machine Markings (1993, Machine Cancel Society).
16. Payne, Robert and Bart Billings, A History of Pitney-Bowes (1999, Machine Cancel Society).
17. Washburn, Robert M. and Carl R Ditsch, The Purple Machine Cancel Handbook (1994).
18. Becker, John R, III, An Introduction to US Flats Machine Cancels (1996, Machine Cancel Society).
19. Katz, Gordon, Maryland Postal History Project, Machine Cancel Forum and LaPosta.
20. Payne, Bob, An Exhibit of U.S. Classic Machine Cancels, 1871 – 1991 (1995, Machine Cancel Society).