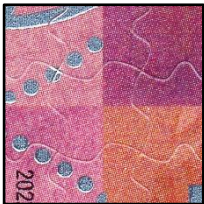


Sheet Stamp Pane of 4, \$10 Floral Geometry 2023 – Banknote Corporation of America (BCA)

Genuine

5755

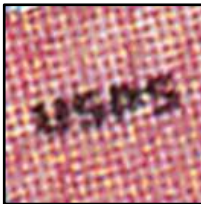
Dull surface, Silver ink glossy (Daylight);
 Tagged, Greenish Yellow (SWUV);
 Low Bright mottled paper (LWUV);
 Backing paper: Dead (LWUV).



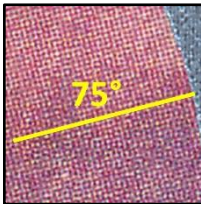
Die cut: 10.8 x 10.6
Even



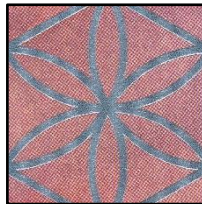
Date: Solid Black font



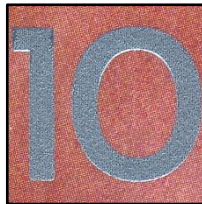
Microprinting: USPS



Background: Waffled
pattern 75° angled



Thick lines



Thick lettering

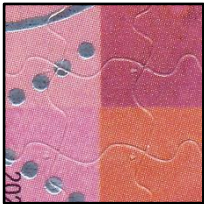


Plate # B1111

Counterfeit

5755 CF1

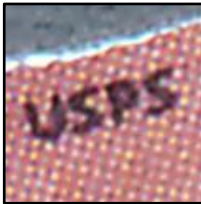
Dull surface, Silver ink glossy (Daylight);
 Tagged, Yellow (SWUV);
 Lettering & Lines looks untaged (SWUV);
 Low Bright paper (LWUV);
 Backing paper: Low Bright (LWUV).



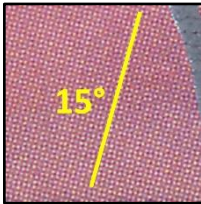
Die cut: 10.8 x 10.5
Even



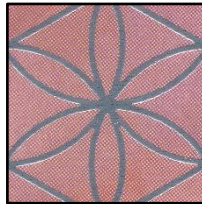
Date: Solid Black font,
As genuine



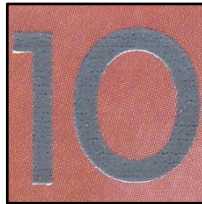
Microprinting: USPS
More open "S"



Background: Waffled
pattern 15° angled



Thinner lines as genuine



Thinner lettering
as genuine



Plate # B1111,
As genuine

Genuine

CF1

SWUV light



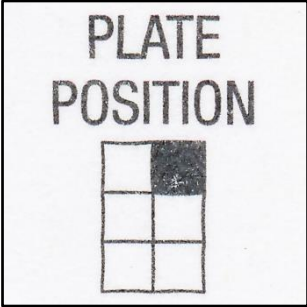
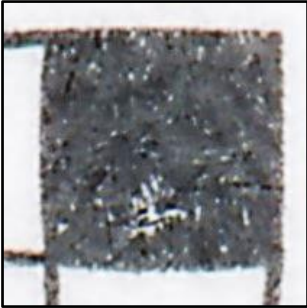
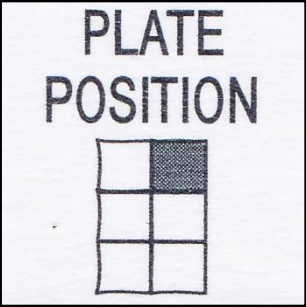
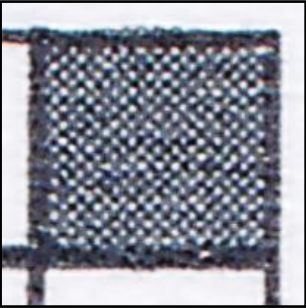
Tagged, Glows Greenish Yellow



Tagged, Glows Yellow;
 Lettering & Lines looks untaged

Sheet Stamp Pane of 4, \$10 Floral Geometry 2023 – Banknote Corporation of America (BCA)

Backing Paper

<p>Genuine Off-white paper</p>   <p>Solid Black grid, can be on all six positions</p>	<p>CF1 White paper</p>   <p>Black waffled grid 45° angled , on Upper Right (UR) position</p>				
--	---	--	--	--	--