

Sheet Stamp Pane of 20, (70c) Corsage 2017 – Banknote Corporation of America (BCA)

Genuine

5200

Glossy surface, Off-white paper (Daylight);

Tagged (SWUV);

Hi-brite paper (LWUV).

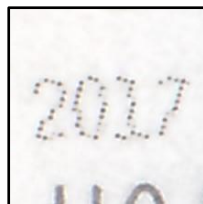
Backing paper: Mottled dead (LWUV).

Backing:

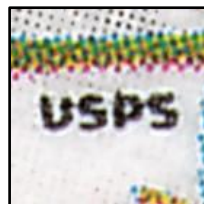
Faint even rouletting 11, Full wave line.



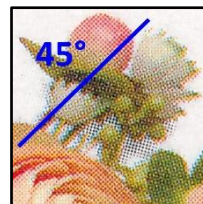
Die cut: 10.9 x 10.8
Even



Date: Faint dotted font



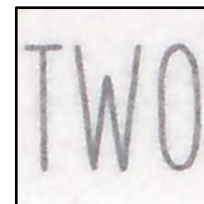
Microprinting USPS



Fine Dotted pattern 45°
angled



Shadows Black dotted



Solid Gray lettering

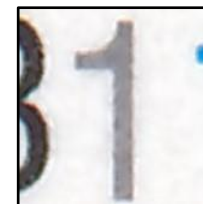


Plate # B11111
Solid Gray "1"

Counterfeits

5200 CF1

Semi-gloss surface, Off-white paper (Daylight);

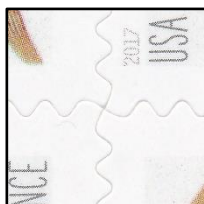
Discolored paper (Daylight);

Untagged (SWUV);

Low bright & random yellowish glow (LWUV).

Backing:

Very faint even rouletting 10, Full wave lines, almost cut through the paper



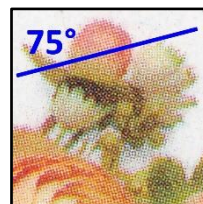
Die cut: 10.85 x 10.7
Even



Date: Double dotted font



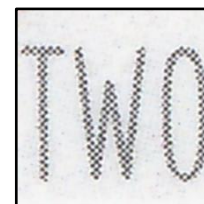
Microprinting USPS
On dotted field



Dotted pattern
75° angled



Shadows grainy with
multi-colored dots



Dotted Gray lettering



Plate # B11111
Gray "1" waffle pattern

5200 CF2

Semi-gloss surface, White paper (Daylight);

Untagged (SWUV);

Low bright paper (LWUV).

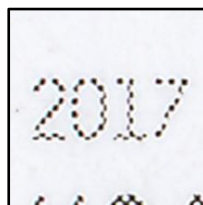
Backing paper: Hi-brite (LWUV).

Backing:

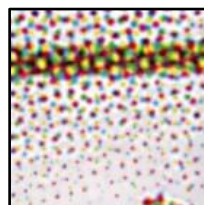
Very faint even rouletting 8, Full wave lines.



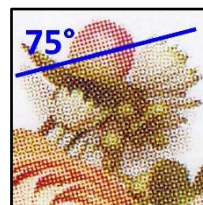
Die cut: 10.9 Uneven



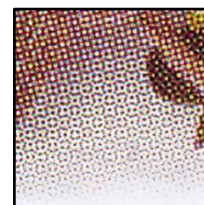
Date: Clear dotted font



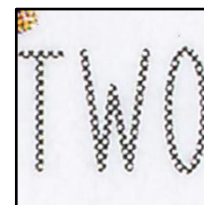
Microprinting omitted



Wide dotted pattern
75° angled



Shadows heavy grainy
with multi-colored dots



Dotted Gray lettering,
Wider between T & W

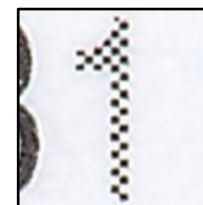


Plate # B11111
Gray "1" dotted pattern

5200 CF3

Semi-gloss surface, White paper (Daylight);

Tagged (SWUV);

Margin: Low bright paper (LWUV).

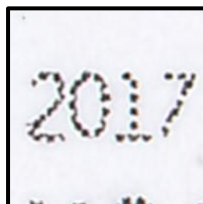
Backing paper: Bright (LWUV).

Backing:

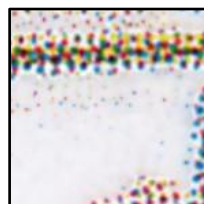
Very faint even rouletting 13 ~ 13½, Full wave lines.



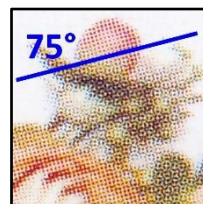
Die cut: 10.9 x 10.75
Even



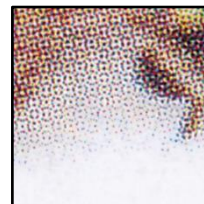
Date: Uneven, single
row dotted, font



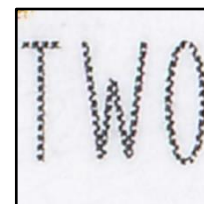
Microprinting omitted



Wide dotted pattern
75° angled



Shadows grainy with
multi-colored dots







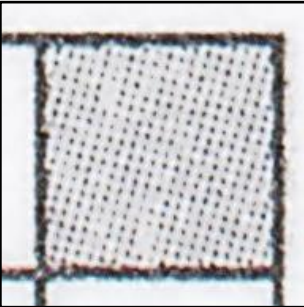
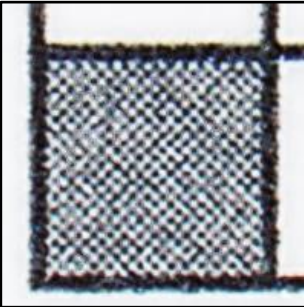
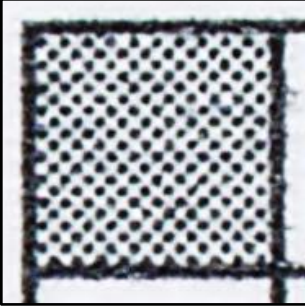
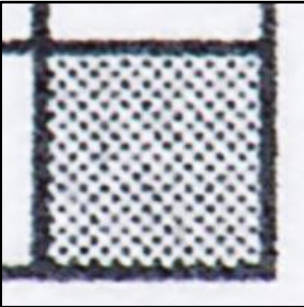
Dotted Gray lettering,
Wider between T & W



Plate # B11111
Gray "1" dotted pattern

Sheet Stamp Pane of 20, (70c) Corsage 2017 – Banknote Corporation of America (BCA)

Plate Positions

Genuine	CF1	CF2	CF3		
<p>PLATE POSITION</p> 	<p>PLATE POSITION</p> 	<p>PLATE POSITION</p> 	<p>PLATE POSITION</p> 		
					
Position possible on all 10 positions, Light open dotted pattern 10°	Plate position block Lower Left (LL), Dark compact dotted pattern 45°	Plate position block Lower Right (LR), Wide large dotted pattern 45°	Plate position block Lower Right (LR), Wide dotted pattern 45°		