

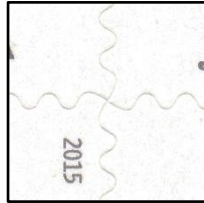
Double-sided Convertible Booklet of 20 (49c) Geometric Snow Flakes 2015 Banknote Corporation of America (BCA) for Sennet Security Products (SSP)

Genuine

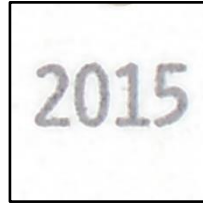
5031-34

Dull surface (Daylight);
Tagged (SWUV);
Variety I: Dead paper (LWUV);
Variety II: Hi-brite paper (LWUV).

Even Rouletted 13 on fold lines.



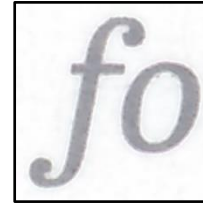
Die Cut 11.25 x 10.8
Even



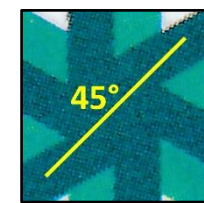
Date: Bold Gray font,
with some Gray dots



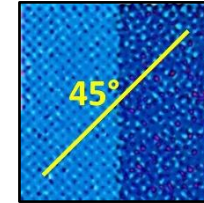
Microprint: USPS,
Solid uneven font



Italic font: Solid Gray,
lightly jagged edges



Fine waffled pattern
45° angled



BC: Dotted/waffled
pattern 45° angled



Plate # S11111
Gray 1: Solid

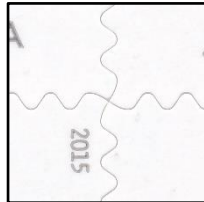
Counterfeits

5031-34 CF1

Dull surface (Daylight);
Untagged (SWUV);
Low bright paper (LWUV).

Uneven Rouletted 10 on fold lines.

Characteristics of printing almost as CF5.



Die Cut 11.2 x 10.7
Even



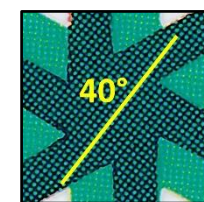
Date: Solid Gray font,
with some Gray dots



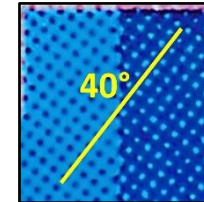
Microprint: USPS
Bold Grayish Black



Italic font: Gray with
Whitish edges



Waffled pattern
40° angled



BC: Dotted/waffled
pattern 40° angled

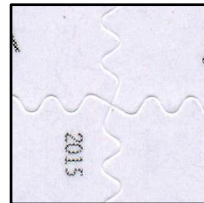


Plate # S11111,
Gray 1: Dotted

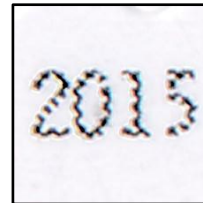
5031-34 CF2

Semi-glossy surface (Daylight);
Untagged (SWUV);
Mottled low bright paper (LWUV).

Even Rouletted 13 on fold lines.



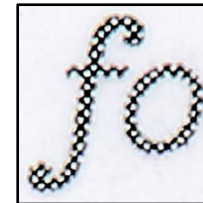
Die Cut 11.2 x 10.75
Even



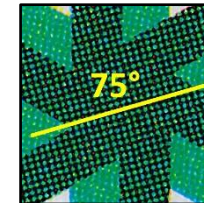
Date: Black font with
White dots



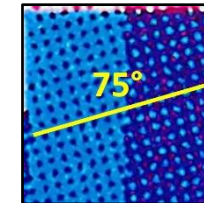
Microprint: USPS
Black blurred font



Italic font: Black with
White dots



Waffled pattern
75° angled



BC: Dotted/waffled
pattern 75° angled

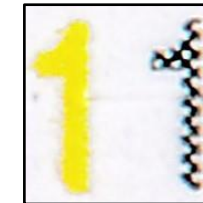


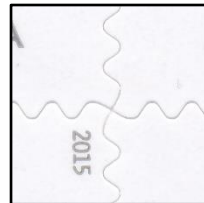
Plate # S11111, Gray 1
Black White dotted

5031-34 CF5

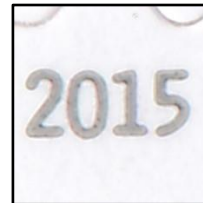
Semi-glossy surface (Daylight);
Tagged, glows under SWUV and LWUV;
Booklet Cover: Low bright paper (LWUV).

Uneven Rouletted 10 on fold lines.

Characteristics of printing almost as CF2.



Die Cut 11.25 x 10.7
Even



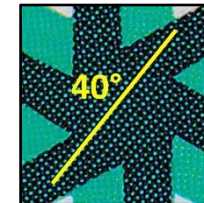
Date: Solid Gray font,
with some dots



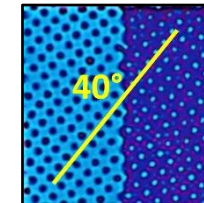
Microprint: USPS
Bold Grayish Black



Italic font: Gray with
Whitish edges



Waffled pattern
40° angled



BC: Dotted/waffled
pattern 40° angled

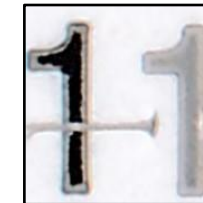


Plate # S11111,
Gray 1: White outlined

Double-sided Convertible Booklet of 20 (49c) Geometric Snow Flakes 2015
 Banknote Corporation of America (BCA) for Sennet Security Products (SSP)



5031

5032

5033

5034

Scott 5034b

Genuine
Microprinting
USPS



5031



5032



5033



5034

CF1
Microprinting
USPS



5031 CF1



5032 CF1



5033 CF1



5034 CF1

CF2
Microprinting
USPS



5031CF2



5032CF2



5033CF2



5034CF2

CF5
Microprinting
USPS



5031 CF5



5032 CF5



5033 CF5



5034 CF5