

Double-sided Convertible Booklet of 20, (49c) Christmas, Magi 2014 – Banknote Corporation of America (BCA) for SSP

Genuine

4945

Semi-gloss surface, (Daylight);
Tagged, Faint Yellowish Green (SWUV);
Dead paper, luminescent ink (LWUV).

Even rouletted 13 on fold lines.

Color of margins and booklet cover: **Silver**



Die Cut 10.8 x 10.9
Peak- Valley, Even



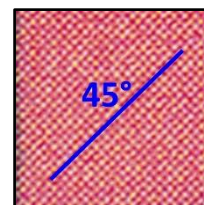
Die Cut 10.8 x 10.9
Valley-Peak, Even



Date: Black font,
uneven ends



Microprinting USPS:
Small font



Sky: Waffled pattern
45° angled



BC: background Silver;
Lettering spaced

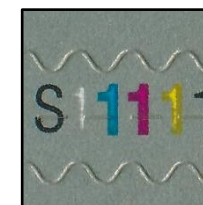


Plate # S11111,
White "1" uneven

Counterfeit

4945 CF1

Glossy surface (Daylight);
Tagged Bright Yellowish Green (SWUV);
Hi-brite paper, Dead ink (LWUV).

Even rouletted 12 on fold lines.

Color of margins and booklet cover: **Gold**



Die Cut 10.75 x 10.9
Peak- Valley, Uneven



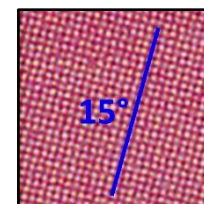
Die Cut 10.75 x 10.9
Valley-Peak, Uneven



Date: Black font,
straight ends



Microprinting USPS:
Large clear font



Sky: Waffled pattern
15° angled



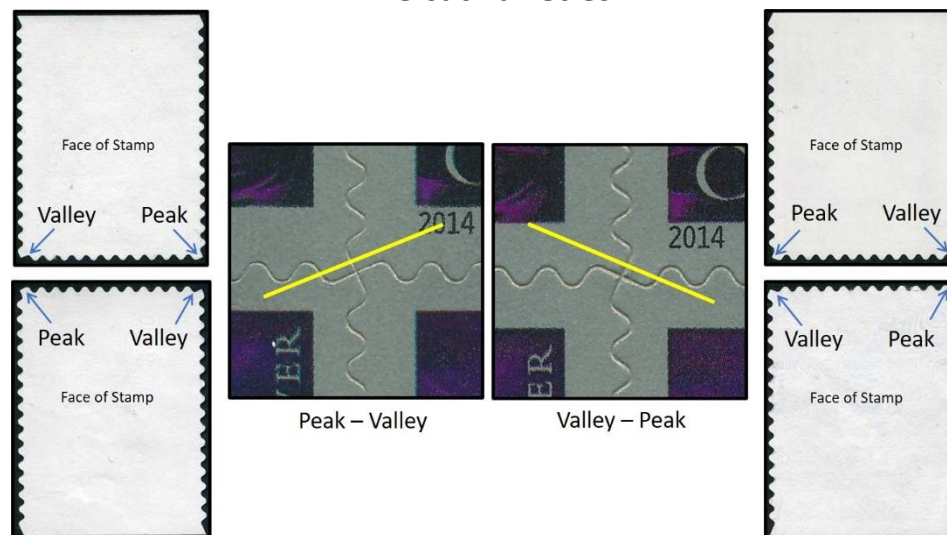
BC: background Gold;
Lettering closely



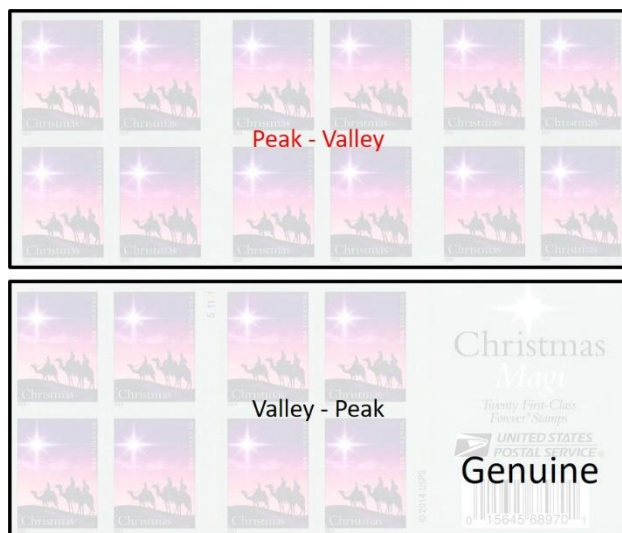
Plate # S11111,
White "1" Even

Double-sided Convertible Booklet of 20, (49c) Christmas, Magi 2014 – Banknote Corporation of America (BCA) for SSP

Die cut varieties



4945a Genuine



4945a CF1 Counterfeit

