

Double-sided Convertible Booklet of 20, (44c) Winter Flowers 2014 – Banknote Corporation of America for SSP

Genuine

4862-65

Dull surface, Off-white paper (Daylight);
Tagged, Greenish Yellow (SWUV);
Dead paper (LWUV).

Even rouletted 13 on fold lines.

Colors: Purple background more dull than CF1.



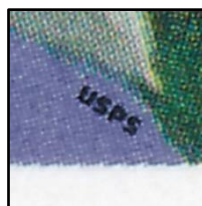
Die Cut 10.8 x 10.9
Peak-Valley Even



Die Cut 10.8 x 10.9
Valley-Peak Even



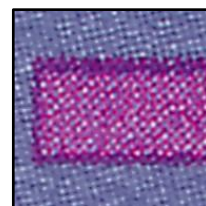
Date: Black solid font,
Flat top of "1"



Microprinting USPS:
Small font



Lettering FOREVER:
Solid waffle pattern



Booklet Cover:
Pink bar overprinted

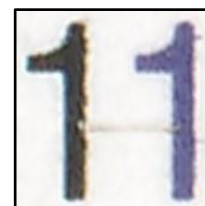


Plate # S11111
Last "1" solid

Counterfeit

4862-65 CF1

Semi-gloss surface, White paper (Daylight);
Tagged, Bright Yellowish Green (SWUV);
Hi-brite paper (LWUV).

Even rouletted 12 on fold lines.

Colors: Purple background more bright.



Die Cut 10.8 x 10.9
Peak-Valley Uneven



Die Cut 10.8 x 10.9
Valley-Peak Uneven



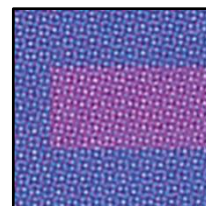
Date: Black solid font,
Sharp top of "1"



Microprinting USPS:
Large (Inverted) font



Lettering FOREVER:
Orange dotted

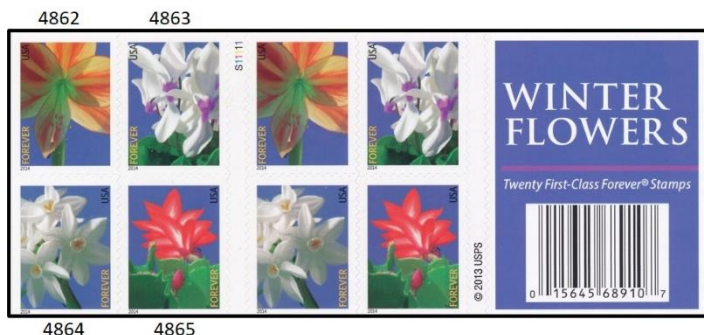


Booklet Cover:
Pink bar embedded



Plate # S11111,
Last "1" White dotted

4865b



4862 - Cyclamen
4863 - Paperwhite
4864 - Amaryllis
4865 - Christmas Cactus

Genuine
Microprinting USPS
Small font



4862



4863



4864



4865

Counterfeit type 1
Microprinting USPS
large inverted font,
on 4863, 64 and 65
CF1



4862 CF1



4863 CF1



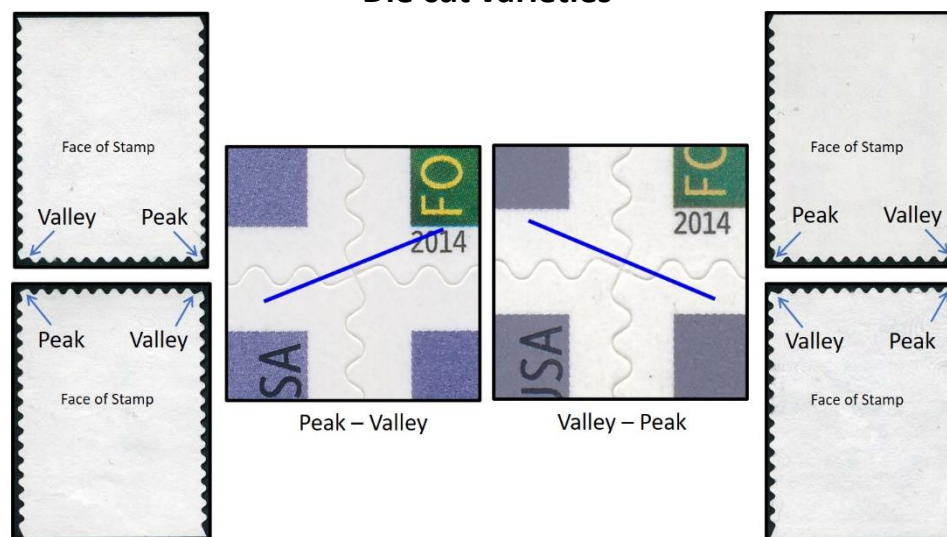
4864 CF1



4865 CF1

Double-sided Convertible Booklet of 20, (44c) Winter Flowers 2014 – Banknote Corporation of America for SSP

Die cut varieties



4865b Genuine and CF2



4865b Counterfeit CF1

