

Sheet stamp (47c) Love Hearts Forever 2015 – CCL label Inc. (CCL)

Genuine

4955-56

Dull surface (Daylight);

Tagged (SWUV);

Dead paper (LWUV).

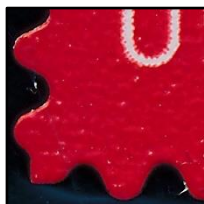
Backing Paper: Dead paper (LWUV)

Backing paper:

Lightly rouletted between the stamps.

Front:

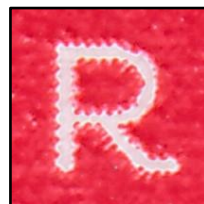
Hard to see uneven cut between stamps.



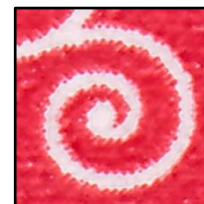
Die cut: 10.9 Even



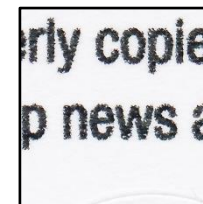
Date: White,
blurred with Red dots



Picked uneven font;
Angular R



Light uneven Red;
Picked edges



Backing paper:
"news" written correctly

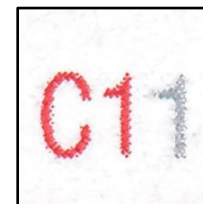


Plate # C11
Font with dots



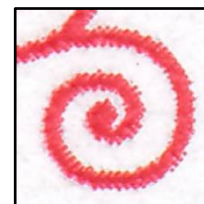
Die cut: 10.9 Even



Date: Silver,
Smeared and white dots



Dotted uneven font;
Angular R



Red with Picked edges

Counterfeits

4955-56 CF1

Semi-glossy surface (Daylight);

Untagged (SWUV);

Very Hi-brite face (LWUV);

Backing paper: Dead paper (LWUV).

Color Red:

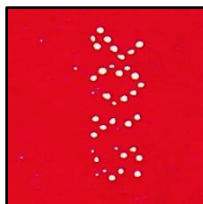
Darker than genuine.

Backing paper and front:

Heavily rouletted between the stamps and
cut along the sides.



Die cut: 11.1 Even



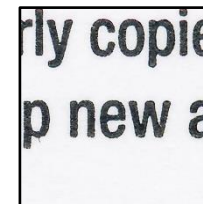
Date: White,
Blurred unreadable font



Bold even font;
Rounded R angle



Smooth Red;
Smooth lines



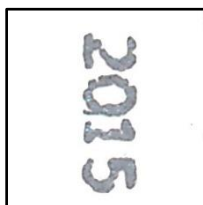
Backing paper:
"news" written as "new"



Plate # C11,
Bold solid font



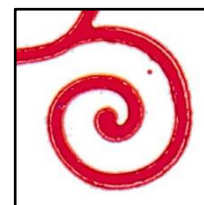
Die cut: 11.1 Even



Date: Silver, Uneven font



Bold uneven font;
Rounded R angle



Solid smooth Red;
Random Red ink spots

Sheet stamp (47c) Love Hearts Forever 2015 – CCL label Inc. (CCL)

4955-56 CF2

Dull surface (Daylight);
Untagged (SWUV);
 Hi-brite face (LWUV);
 Backing paper: Hi-brite (LWUV).

Color Red:
 Darker than genuine.

Backing paper:
 Rouletted as genuine issues.

Front:
 Hard to see uneven cut between stamps.



Die cut: 10.9 Even



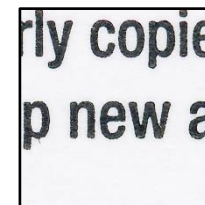
Date: Bold with red dots



Bold even font;
Angular R



Light grainy Red;
Smooth lines



Backing paper:
"news" written as "new"

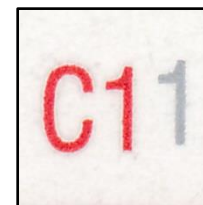
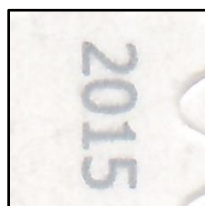


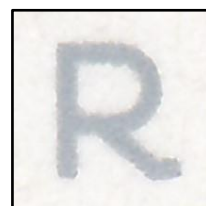
Plate # C11
Smooth grainy font



Die cut: 10.9 Even



Date: Silver,
Bold solid font



Bold even font;
Angular R



Light grainy Red

4955-56 CF3

High glossy surface (Daylight);
Untagged (SWUV);
 Dull face (LWUV);
 Backing paper: Low Bright (LWUV).

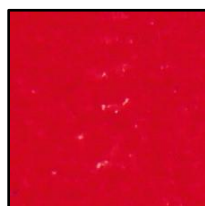
Color Red:
 Darker than genuine, but lighter as CF1, 2 and 4.

Backing paper:
 Not rouletted.

Front:
 Lightly straight cut between stamps.



Die cut: 11.2 x 11.1
Even



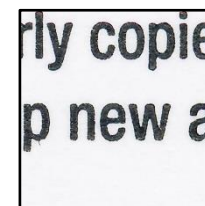
Date: Unreadable



Bold even font;
Angular R



Smooth Red prints,
Blurred lines



Backing paper:
"news" written as "new"

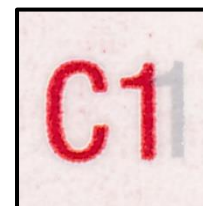
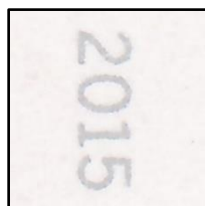


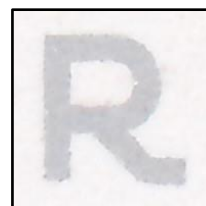
Plate # C11
Bold, smooth grainy font



Die cut: 11.2 x 11.1
Even



Date: Silver, Solid font



Bold even font;
Angular R



Solid uneven lines,
thinner as CF1 & CF2

Sheet stamp (47c) Love Hearts Forever 2015 – CCL label Inc. (CCL)

4955-56 CF4

Glossy surface (Daylight);
Untagged (SWUV);
 Low Bright face (LWUV);
 Backing paper: Low Bright (LWUV).

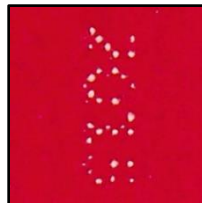
Color Red darker than genuine.

Backing paper:
 Not rouletted.

Front:
 Lightly straight cut between stamps.



Die cut: 11.1 Even
 Rounded corners



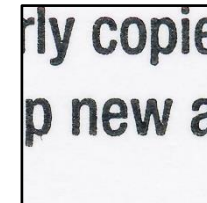
Date: White dotted,
 hard to read



Bold even font;
 Rounded R angle



Smooth Red prints,
 Uneven lines



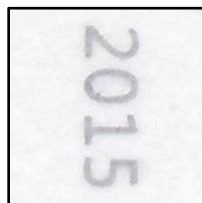
Backing paper:
 "news" written as "new"



Plate # C11
 Smooth light grainy font



Die cut: 11.1 Even
 Rounded corners



Date: Silver, Solid font



Bold even font;
 Rounded R angle



Uneven lines, slightly
 thinner and lighter AS CF3

4955-56 CF5

Semi-gloss surface (Daylight);
Tagged, almost as Genuine (SWUV);
 Bright paper (LWUV);
 Backing paper: Bright (LWUV).

Color Red as genuine.

Backing paper:
 Rouletted as genuine issues.

Front:
 No cut between stamps.

Found: 2023



Die cut: 11 Even



Date: White, Red dotted



Bold even font;
 Rounded R large angle



Smooth Red prints,
 Even lines



Backing paper:
 "news" written correctly

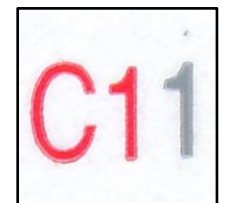
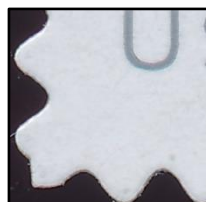
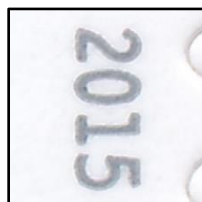


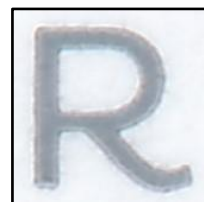
Plate # C11, outlined font,
 Large C, small serif on "1"



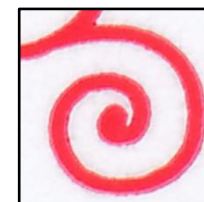
Die cut: 11 Even



Date: Silver, Thick Solid,
 Serif of "1" straight angled



Bold even font;
 Rounded R large angle

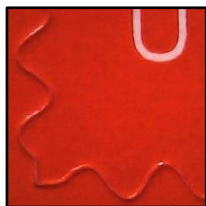


Uneven lines, slightly

Sheet stamp (47c) Love Hearts Forever 2015 – CCL label Inc. (CCL)

4955-56 CF5a

Characteristics as CF5, except
the Silver lettering appears as Dark Gray



Die cut: 11 Even



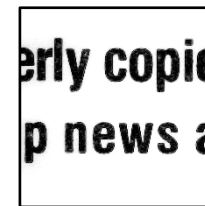
Date: White, Red dotted



Bold even font;
Rounded R large angle



Smooth Red prints,
Even lines

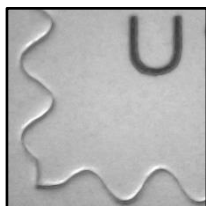


Backing paper:
"news" written correctly



Plate # C11, outlined font,
Large C, small serif on "1"

Found and scans by David Crone (2023)



Die cut: 11 Even



Date: Silver, Thick Solid,
Serif of "1" straight angled



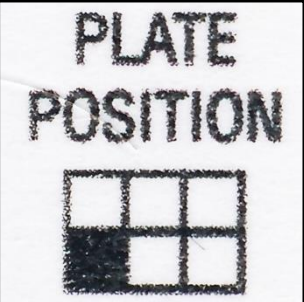
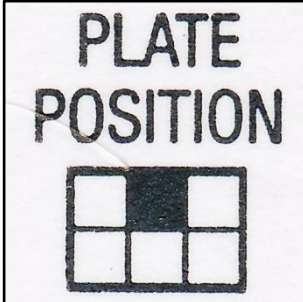
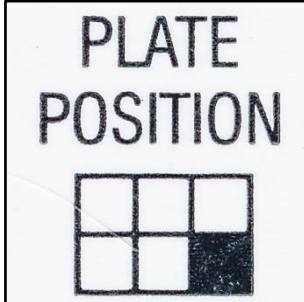

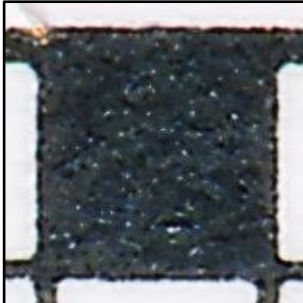
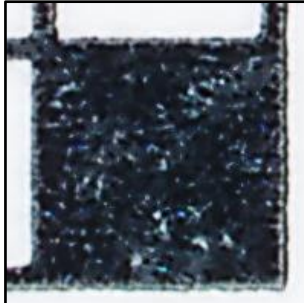
Bold even font;
Rounded R large angle



Uneven lines, slightly

Sheet stamp (47c) Love Hearts Forever 2015 – CCL label Inc. (CCL)

Backing Paper

Genuine Off-white paper	CF1 White paper	CF2	CF3	CF4	CF5 & CF5a White paper
		<p><i>Scan</i></p>	<p><i>Scan</i></p>	<p><i>Scan</i></p>	
		<p><i>Scan</i></p>	<p><i>Scan</i></p>	<p><i>Scan</i></p>	
<p>Uneven Black lines and font, Block can be on all six positions</p>	<p>Even Black lines and font, Block on Upper Middle (UM) position</p>	<p>Solid Black block, on Upper Right (UR) position</p>	<p>Solid Black block, on Upper Middle (UM) position</p>	<p>Solid Black block, on Upper Middle (UM) position</p>	<p>Even Black lines and font, Block on Lower Right (LR) position</p>