

## Double sided Convertible Booklet of 20, (45c) Christmas Holy Family 2012 – Banknote Corporation of America (BCA) for SSP

### Genuine

#### 4711

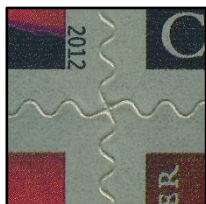
Dull surface, Off-white paper (Daylight);

Tagged (SWUV);

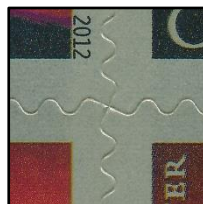
Dead paper (LWUV).

Even Rouletted 12½ on fold line.

Margin color: Yellowish Silver.



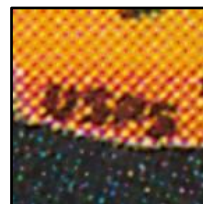
Die cut: 10.8 x 10.9 E  
Peak – Valley (12-side)



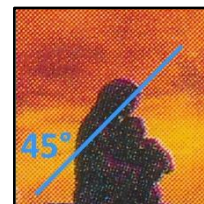
Die cut: 10.8 x 10.9 E  
Valley – Peak (8-side)



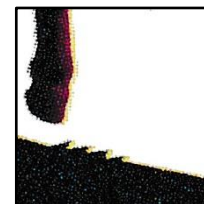
Date: Solid Black font,  
Angled serif on "1"



Microprinting: USPS,  
Uneven font



Light grainy pattern,  
angled 50°



Booklet Cover:  
Grass on the hill

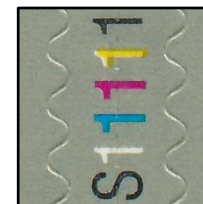


Plate # S11111  
Solid picked font

### Counterfeit

#### 4711 CF1

Glossy surface, White paper (Daylight);

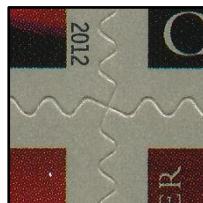
Tagged (SWUV);

Booklet Cover Untagged;

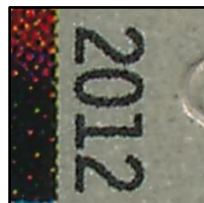
Hi-brite paper (LWUV).

Even Rouletted 12½ on fold line.

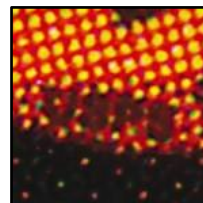
Margin color: Silver.



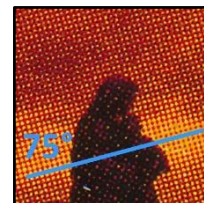
Die cut: 10.8 x 10.9  
Uneven, Valley – Peak



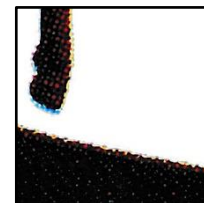
Date: Solid Black font,  
Straight serif on "1"



Microprinting: USPS,  
Clear even font



Grainy pattern,  
angled 75°



Booklet Cover: No grass  
on the hill

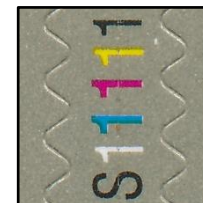
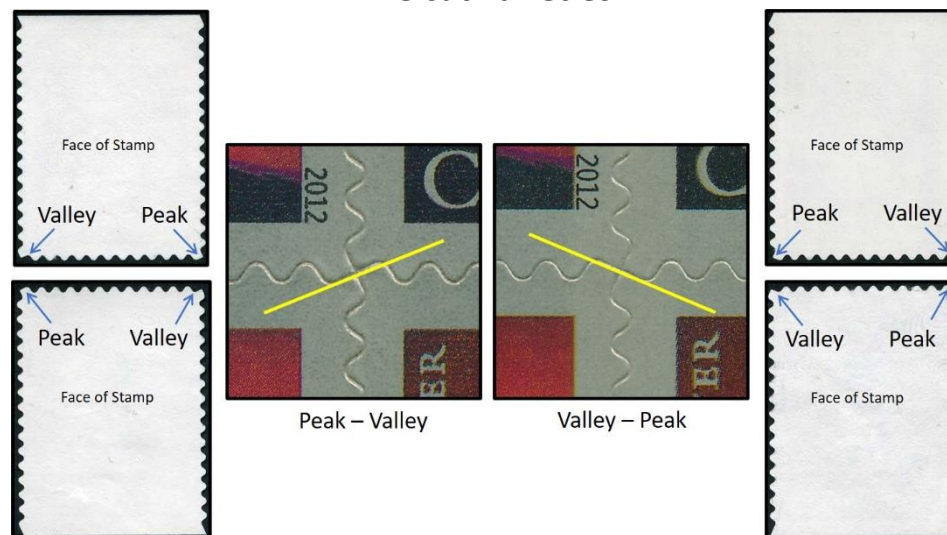


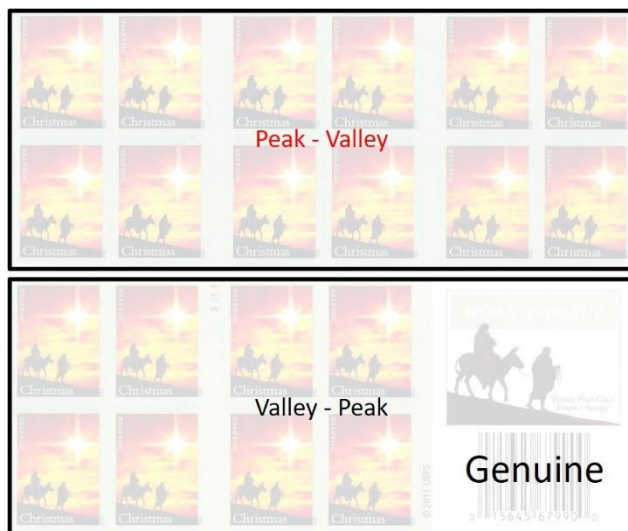
Plate # S11111

Double sided Convertible Booklet of 20, (45c) Christmas Holy Family 2012 – Banknote Corporation of America (BCA) for SSP

## Die cut varieties



## 4711a Genuine



### 4711a Counterfeit

