

Sheet Stamp Pane of 20, (55c) Kwanzaa 2020 – Banknote Corporation of America (BCA)

Genuine

5531

Semi-gloss surface (Daylight);

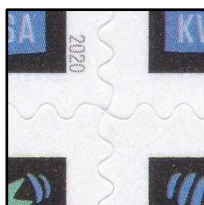
Tagged (SWUV);

Face: Hi-brite paper (LWUV);

Backing paper: Dead (LWUV).

Backing paper:

Even rouletted 11, Wave cut with bridges



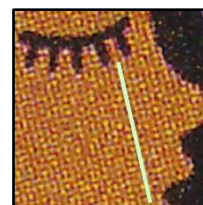
Die cut: 10.75 x 10.9
Even



Date: Thin dotted font



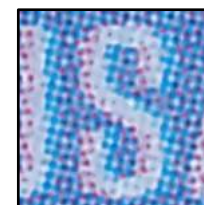
Microprinting:
Clear font, narrow S



Face: Blurred waffle
pattern, thin eyelash



Ornaments: Waffle
pattern diagonally right



Lettering:
“S” more rounded

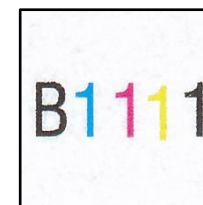


Plate # B1111

Counterfeit

5531 CF1

Semi-gloss surface (Daylight);

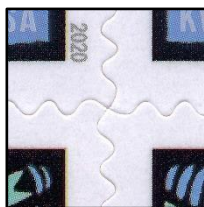
Untagged (SWUV);

Face: Bright paper (LWUV);

Backing paper: Hi-brite (LWUV).

Backing paper:

Even rouletted 8, Wave cut without bridges



Die cut: 10.75 x 10.9
Uneven



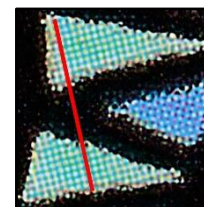
Date: Thick dotted font



Microprinting:
Larger font, close “S”



Face: Clear waffle
pattern, thick eyelash



Ornaments: Waffle
pattern diagonally left



Lettering:
“S” more straight



Plate # B1111
Almost as genuine

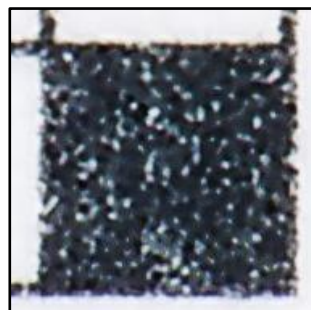
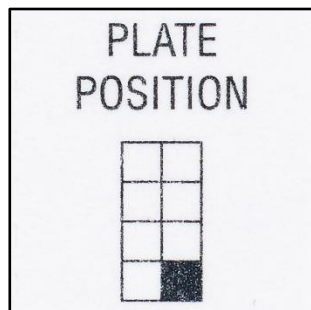
Very convincing counterfeit.

Sheet Stamp Pane of 20, (55c) Kwanzaa 2020 – Banknote Corporation of America (BCA)

Backing Paper

Genuine

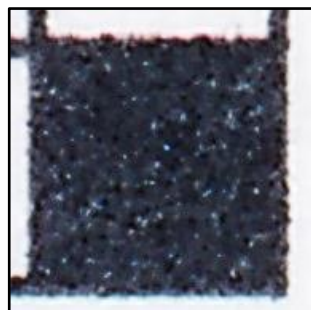
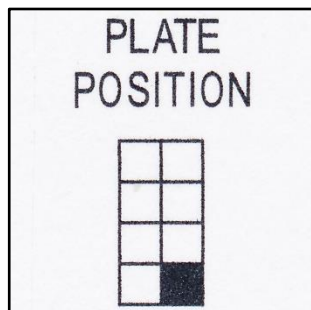
Off-white paper



Uneven black can be on all 8 positions

CF1

White paper



More solid Black, Lower Right (LR)