

Double sided Convertible Booklet of 20, (47c) Florentine Madonna & Child 2016 – Ashton-Potter (USA) Ltd. (APU)

Genuine

5143

Semi-gloss surface (Daylight);
Tagged (SWUV);
 Dead paper, Bright colors (LWUV).

Even Rouletted 10½ on fold line.

Color borders: Goldish silver.



Die cut: 10.8 x 10.9,
Even



Date: Solid Black font,
Large "2" and "6"



Microprinting USPS



In faces:
Light grainy pattern



Light grainy pattern



Booklet Cover: Black
lettering even edges

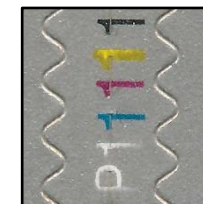


Plate # P1111,
Some blurred numbers

Counterfeit

5143 CF1

Front (BC): Semi-gloss surface (Daylight);
 Back: Glossy surface (Daylight);
Untagged (SWUV);
 Hi-brite paper (LWUV).

Uneven Rouletted 10 on fold line.

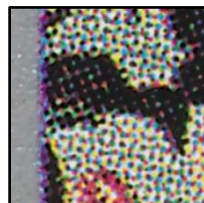
Color borders: Silver.



Die cut: 10.8, Even
Almost as genuine



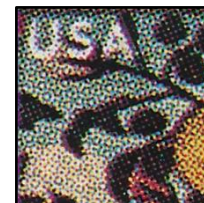
Date: Black thicker font,
Smaller "2" and "6"



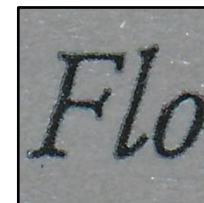
No Microprinting,
Only blurred Black dots



In faces:
Heavy dotted pattern



Heavy grainy pattern



Booklet Cover: Black
Lettering uneven edges

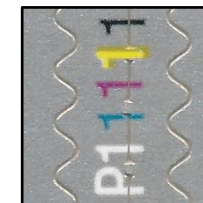


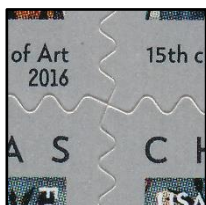
Plate # P1111, Solid font
with smooth edges

5143 CF2

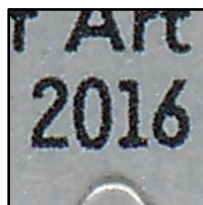
Glossy surface (Daylight);
Untagged (SWUV);
 Hi-brite paper (LWUV).

Even Rouletted 13 on fold line.

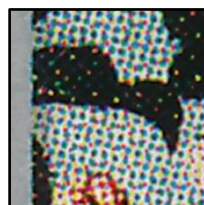
Color appearance more Greenish blue;
 Color borders: Gray.



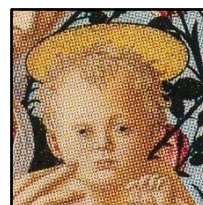
Die cut: 10.75, Even
Almost as genuine



Date: Black thicker font,
different "6"



No Microprinting



In faces:
Heavy dotted pattern



Heavy dotted pattern



Booklet Cover: Black
Lettering even edges

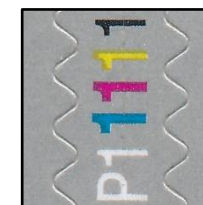


Plate # P1111, Solid
larger font